

APPENDIX A

Project Layout and Comparison

245000

250000

260000

260000

D:\UMWELT (AUSTRALIA) PTY LTD\7053 - 03 SKA\FIGURES_R23\7053_R23_APPA_DEVELOPMENTCORRIDORCOMPARISON_V2.MXD 18/05/2023 4:03:36 PM



737000
7365000
7360000
7355000
7350000

Scale 1:110000 or A4



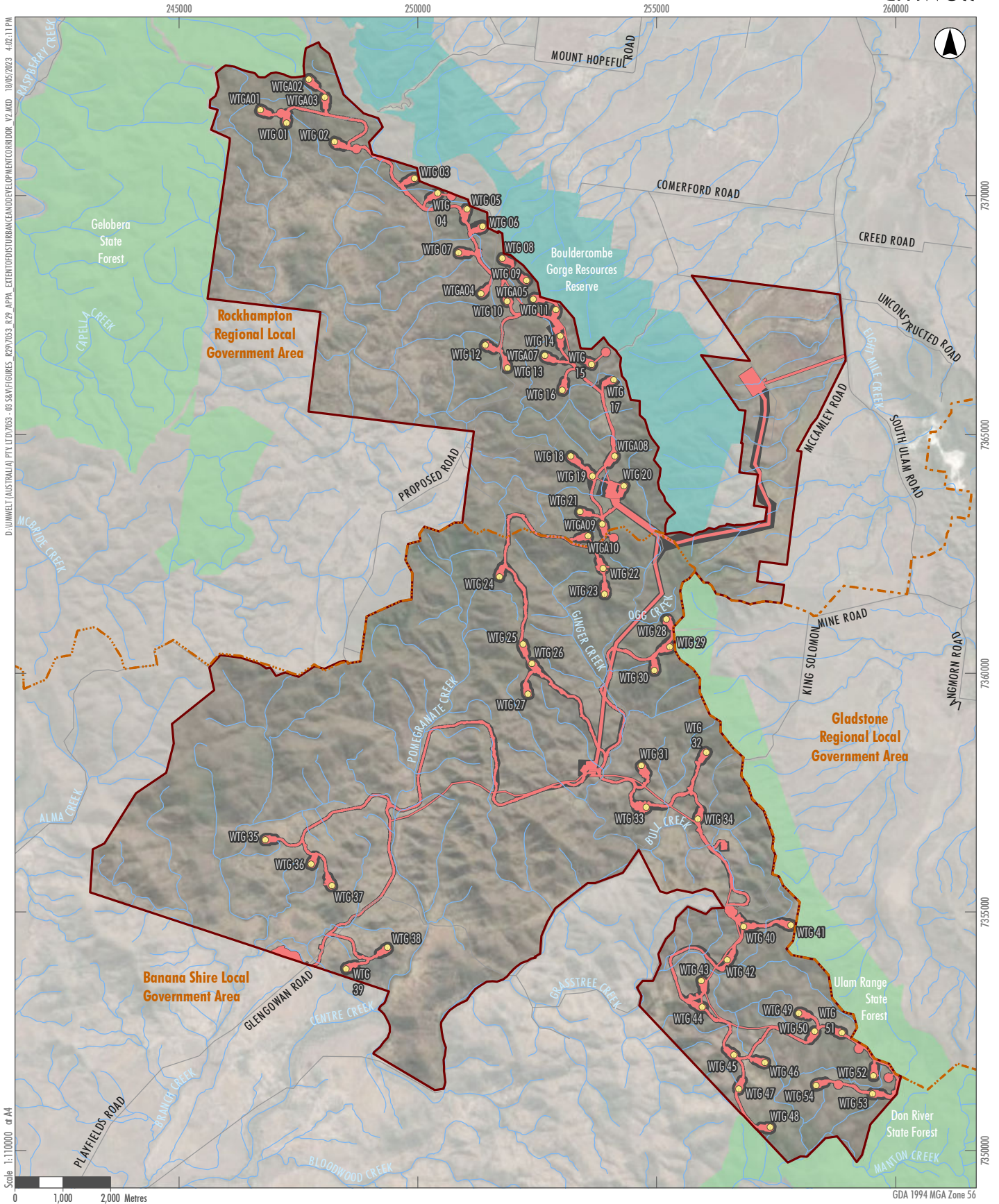
GDA 1994 MGA Zone 56

Legend

- Study Area (16,758 Ha)
- Proposed Development Corridor - 1346 ha (2023)
- Approved Development Corridor - 1975 ha (2022)

APPENDIX A

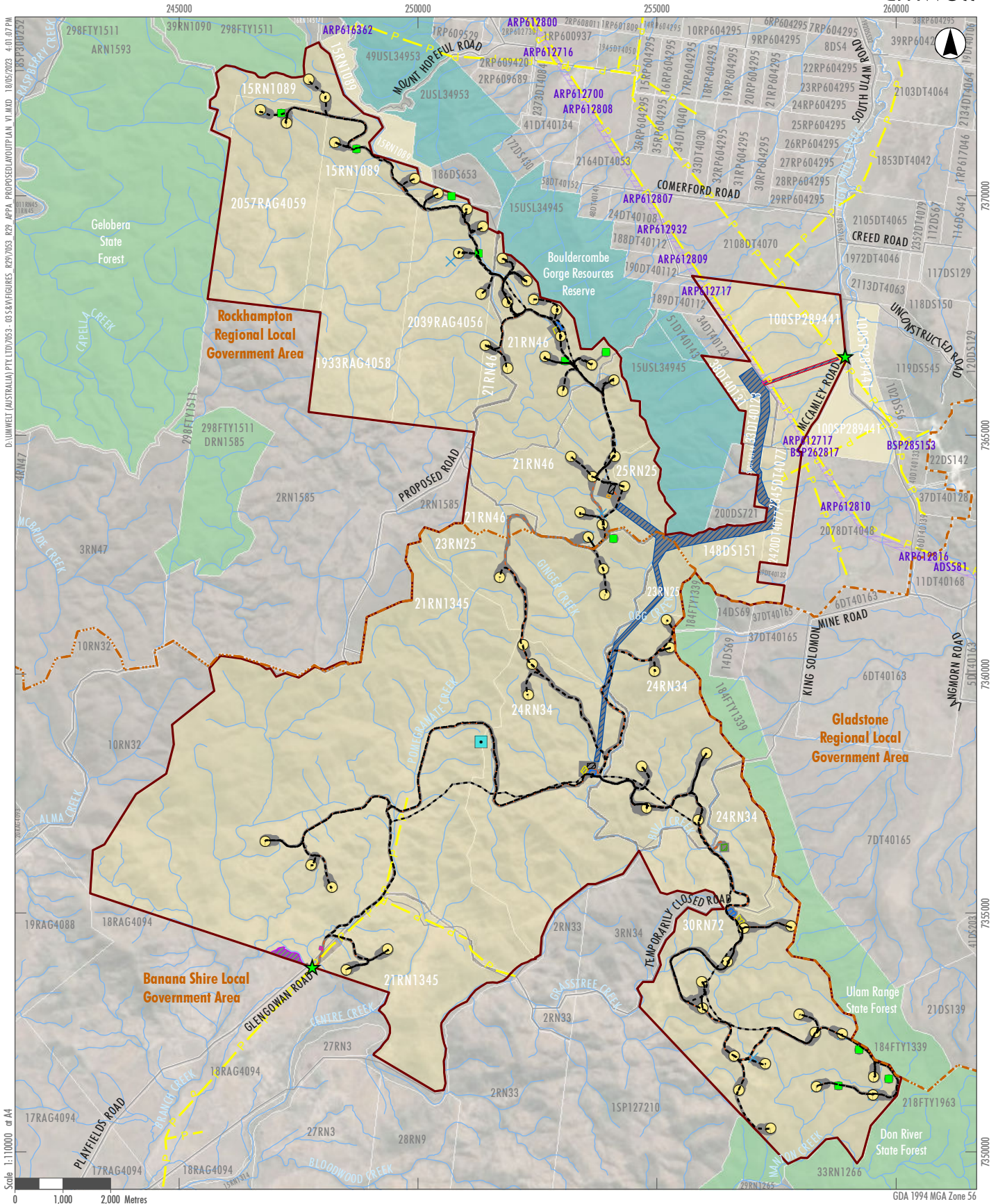
Development Corridor Comparison



- Legend**
- Study Area (16,757 ha)
 - Disturbance Footprint (877.5 ha)
 - Development Corridor (1347 ha)
 - Turbines
 - Local Government Area (LGA)
 - Resources Reserve
 - State Forest

APPENDIX A

Extent of Disturbance Footprint and Development Corridor



Legend

- | | | | |
|---|--|--------------------------------|--------------------------|
| Study Area (16,757 ha) | Resources Reserve | Site Access | Grid Connection Easement |
| Project Site (Development Corridor - 1347 ha) | State Forest | Compound | Access |
| Participating Properties | Easements | Concrete Batching Plant | |
| Property Boundaries | Proposed Project Infrastructure | Temporary Accommodation Camp | |
| Local Government Area (LGA) | Overhead / Underground Cabling | Laydown | |
| HV Electricity Network | Access Roads | Operation and Maintenance Area | |
| Existing Met Mast | Turbines | Site Entry | |
| | Permanent Met Masts | Substation | |
| | Temporary Met Masts | Transmission Infrastructure | |

APPENDIX A

Proposed Layout Plan