

**NEOEN**

**ASSESSMENT OF MATTERS OF  
NATIONAL ENVIRONMENTAL SIGNIFICANCE –  
PRELIMINARY DOCUMENTATION (2021/9137)**

Mount Hopeful Wind Farm

**FINAL – ATTACHMENT B2**

August 2023



## **ASSESSMENT OF MATTERS OF NATIONAL ENVIRONMENTAL SIGNIFICANCE – PRELIMINARY DOCUMENTATION (2021/9137)**

Mount Hopeful Wind Farm

### **FINAL – ATTACHMENT B2**

Prepared by  
Umwelt (Australia) Pty Limited  
on behalf of  
Neoen Australia Pty Ltd

Report No. 22753 / R03  
Date: August 2023



QMS Certification Services

This report was prepared using  
Umwelt's ISO 9001 certified  
Quality Management System.

**Disclaimer**

This document has been prepared for the sole use of the authorised recipient and this document may not be used, copied or reproduced in whole or part for any purpose other than that for which it was supplied by Umwelt (Australia) Pty Ltd (Umwelt). No other party should rely on this document without the prior written consent of Umwelt.

Umwelt undertakes no duty, nor accepts any responsibility, to any third party who may rely upon or use this document. Umwelt assumes no liability to a third party for any inaccuracies in or omissions to that information. Where this document indicates that information has been provided by third parties, Umwelt has made no independent verification of this information except as expressly stated.

**©Umwelt (Australia) Pty Ltd**

# Table of Contents

<b>7.0</b>	<b>Likelihood of Occurrence Assessment</b>	<b>1</b>
7.1	Threatened Ecological Communities	1
7.2	Threatened Flora	1
7.3	Threatened Fauna	1
7.4	Migratory Fauna	2

## Figures

Figure 7.1A	<i>Cycas megacarpa</i> Habitat	3
Figure 7.2	<i>Cossinia australiana</i> Potential Habitat	5
Figure 7.3	<i>Samadera bidwillii</i> Potential Habitat	6
Figure 7.4	<i>Decaspermum struckoiligum</i> Potential Habitat	7
Figure 7.5	Koala Potential Habitat	8
Figure 7.6	Northern Quoll Habitat	15
Figure 7.7	White-throated Needletail Habitat	16
Figure 7.8	Ghost bat Potential Habitat	23
Figure 7.9	Greater glider (southern and central) Habitat	30
Figure 7.10	Grey-headed Flying-fox Potential Habitat	37
Figure 7.11	Red Goshawk Potential Habitat	44
Figure 7.12	Collared Delma Potential Habitat	51

## Tables

Table 7.1	Likelihood of Occurrence Assessment Results: Threatened Flora	1
Table 7.2	Likelihood of Occurrence Assessment Results: Threatened Fauna	2
Table 7.3	Likelihood of Occurrence Assessment Results: Migratory Fauna	2



## 7.0 Likelihood of Occurrence Assessment

The likelihood of occurrence was evaluated for TECs, threatened species and migratory species identified in the PMST (Section 5.0 of Attachment B1). Key results of the likelihood of occurrence assessment are presented below in Section 7.1 to Section 7.4. The full likelihood of occurrence assessment is available in Appendix C of Attachment B4.

As described in Section 4.4 of Attachment B1, suitable habitat for these values has been mapped within the Study Area using modelling criteria detailed per value in Appendix E of Attachment B4.

### 7.1 Threatened Ecological Communities

Regional ecosystems analogous with three TECs were recorded within the Study Area however, these did not satisfy the condition thresholds and/or diagnostic criteria of the relevant TEC. Therefore, no TECs are considered likely to occur within the Study Area.

### 7.2 Threatened Flora

One threatened flora species is known to the Study Area, confirmed during the field survey program: *Cycas megacarpa*. This species was recorded extensively across the Study Area and was the subject of targeted surveys in 2022 to ensure population estimates were robust. The number of *Cycas megacarpa* individuals within the Study Area based on data interpolation is 141,392 across an area of 16,975.8 ha.

In addition to the one known threatened flora species, three species were determined to have a moderate likelihood of occurring based on the presence of suitable habitat and recent and/or nearby records (Table 7.1).

Threatened flora habitat mapping is shown in Figure 7.1 to Figure 7.4. In addition to Figure 6.2 of Attachment B1 which shows the *Cycas megacarpa* field records, Figure 7.1A shows modelled habitat within the Development Corridor and Figure 7.1B displays estimated densities across the Study Area based on the data interpolation.

**Table 7.1 Likelihood of Occurrence Assessment Results: Threatened Flora**

Common Name	Scientific Name	EPBC Act Status	NC Act Status	Likelihood of Occurrence Outcome
-	<i>Cycas megacarpa</i>	Endangered	Endangered	Known
cossinia	<i>Cossinia australiana</i>	Endangered	Endangered	Moderate
-	<i>Decaspermum struckoicum</i>	Endangered	Endangered	
quassia	<i>Samadera bidwillii</i>	Vulnerable	Vulnerable	

### 7.3 Threatened Fauna

Five threatened fauna species are known from the Study Area, confirmed during the field survey program (Table 7.2).

The likelihood of occurrence assessment determined that a further two threatened fauna species have a moderate likelihood of occurrence within the Study Area (**Table 7.2**). No species were identified as having a high likelihood of occurrence.

Threatened fauna habitat mapping is shown in **Figure 7.5** to **Figure 7.13** of Attachment B3.

**Table 7.2 Likelihood of Occurrence Assessment Results: Threatened Fauna**

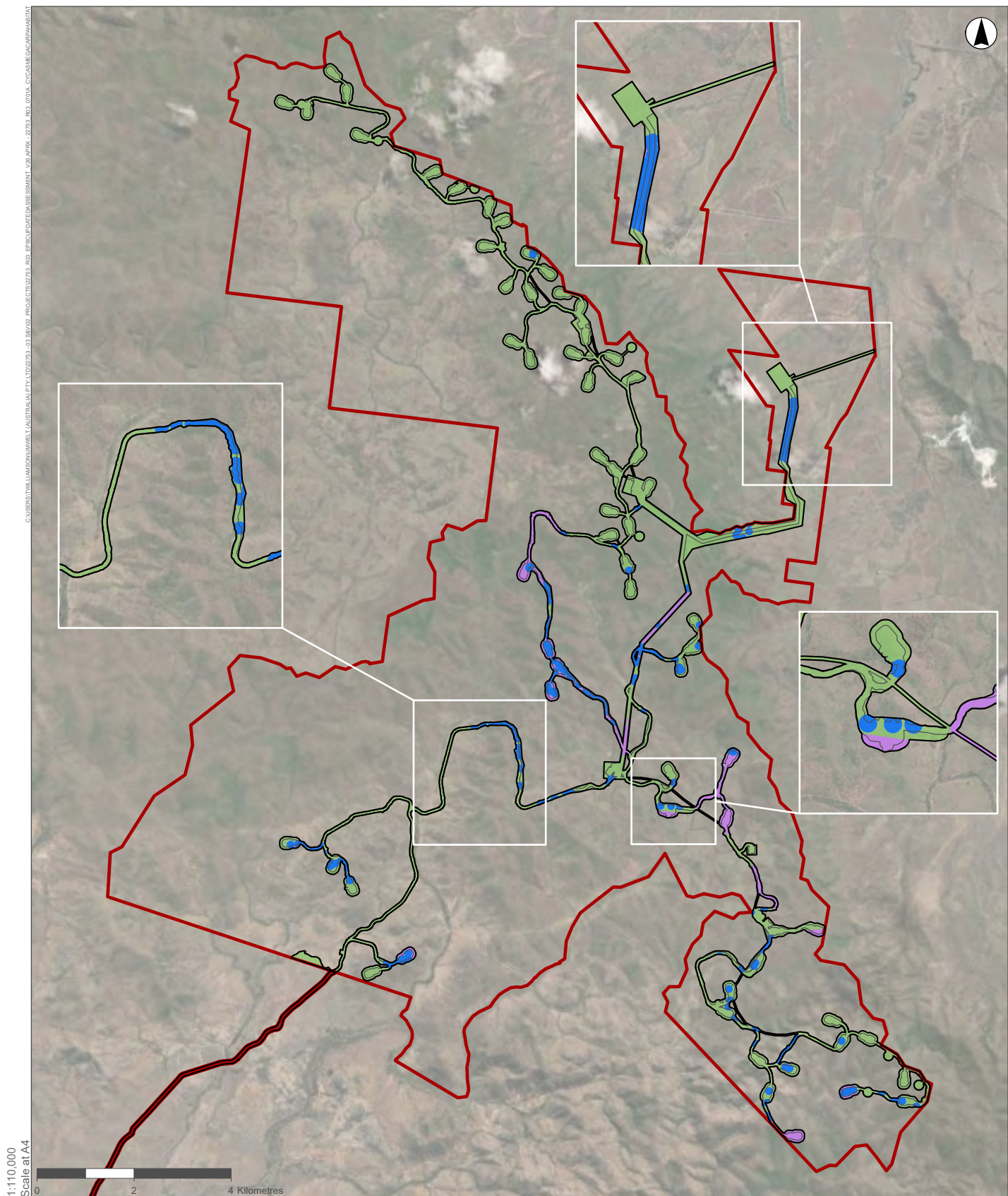
Common Name	Scientific Name	EPBC Act Status	NC Act Status	Likelihood of Occurrence Outcome
greater glider (southern and central)	<i>Petauroides volans</i>	Vulnerable	Vulnerable	Known
yellow-bellied glider (south-eastern)	<i>Petaurus australis australis</i>	Vulnerable	Vulnerable	
northern quoll	<i>Dasyurus hallucatus</i>	Endangered	Least Concern	
squatter pigeon (southern)	<i>Geophaps scripta scripta</i>	Vulnerable	Vulnerable	
white-throated needletail	<i>Hirundapus caudacutus</i>	Vulnerable, Migratory	Vulnerable	
collared delma	<i>Delma torquata</i>	Vulnerable	Vulnerable	Moderate
koala	<i>Phascolarctos cinereus</i>	Endangered	Endangered	Moderate

## 7.4 Migratory Fauna

Excluding the white-throated needletail (*Hirundapus caudacutus*) which is also listed threatened, two migratory fauna species are known from the Study Area, confirmed during field surveys. The likelihood of occurrence assessment determined that one species has a high likelihood of occurrence, and three species have a moderate likelihood of occurrence (**Table 7.3**). Migratory fauna habitat mapping is shown in **Figure 7.15** to **Figure 7.20** of Attachment B3.

**Table 7.3 Likelihood of Occurrence Assessment Results: Migratory Fauna**

Common Name	Scientific Name	EPBC Act Status	NC Act Status	Likelihood of Occurrence Outcome
rufous fantail	<i>Rhipidura rufifrons</i>	Migratory	Special Least Concern	Known
spectacled monarch	<i>Symposiarchus trivirgatus</i>			High
fork-tailed swift	<i>Apus pacificus</i>			
black-faced monarch	<i>Monarcha melanopsis</i>			Moderate
oriental cuckoo	<i>Cuculus optatus</i>			
satin flycatcher	<i>Myiagra cyanoleuca</i>			



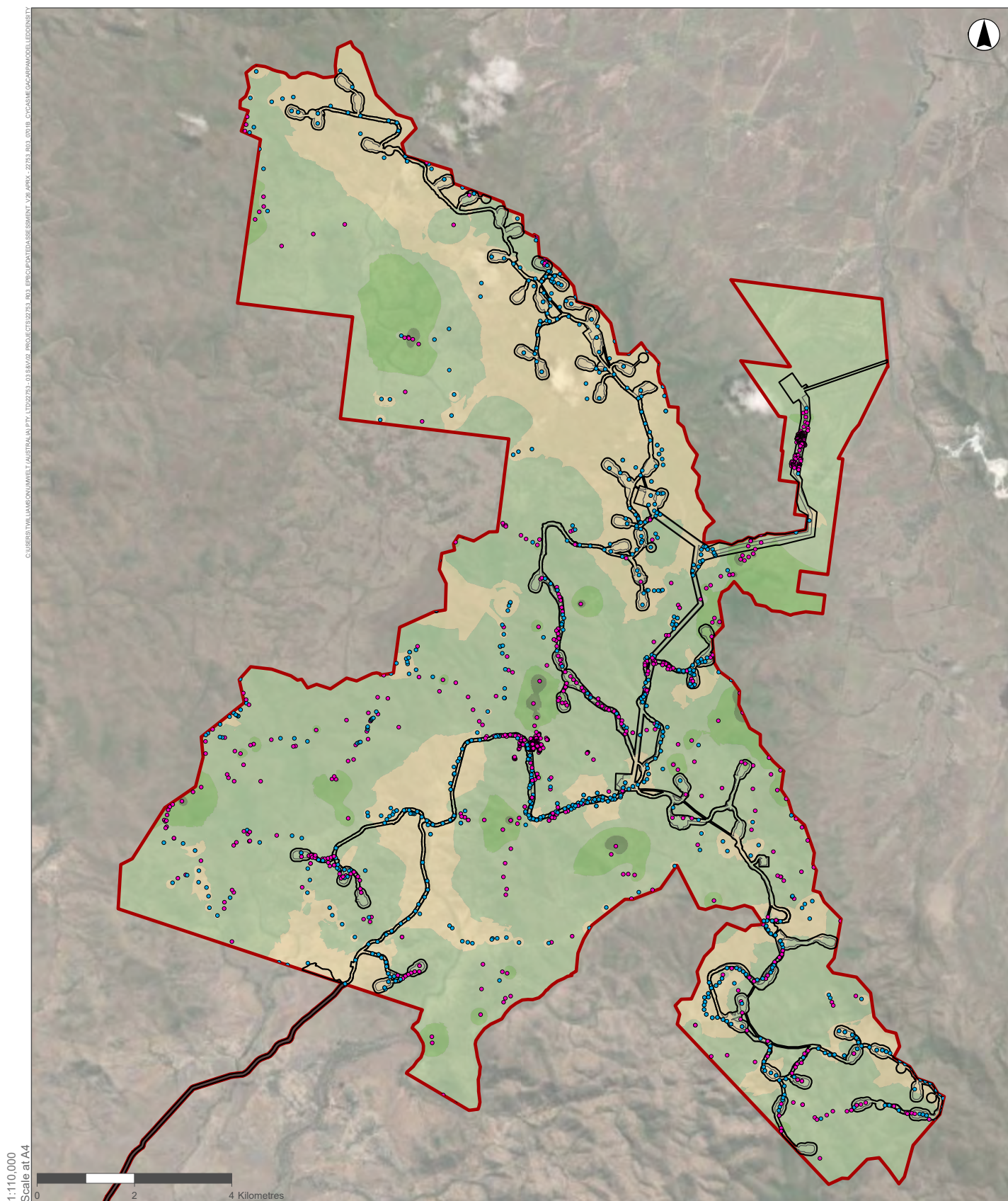
# Legend

- Disturbance Footprint
- Development Corridor
- Study Area
- Cycas megacarpa Habitat**
- Known (confirmed)
- Known (suspected)
- Nil Recorded

FIGURE 7.1A

CYCAS MEGACARPA HABITAT





### Legend

- Disturbance Footprint
- Development Corridor
- Study Area

### Surveyed Locations

- Cycas megacarpa* Absent
- Cycas megacarpa* Present

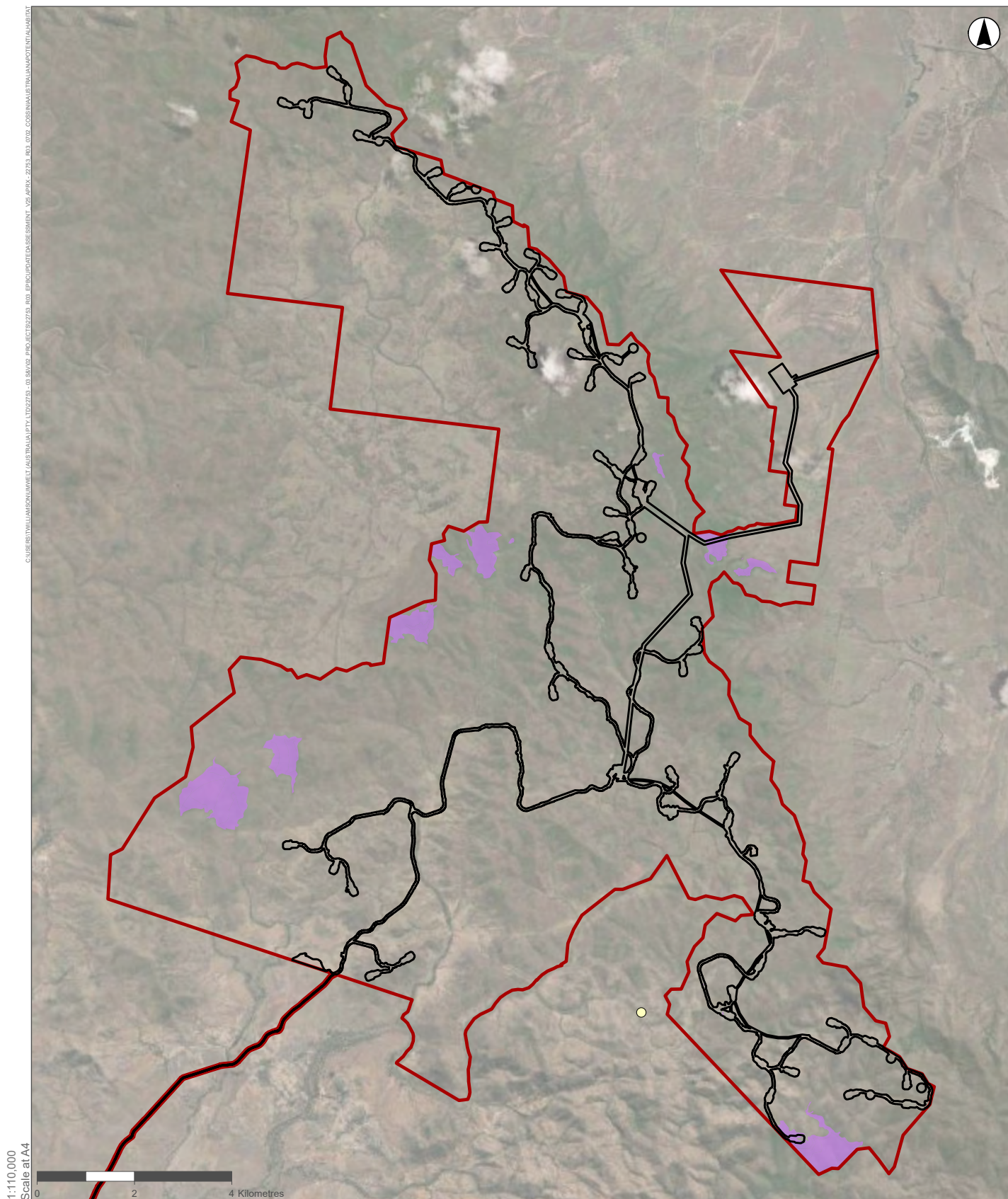
### Predicted Distribution Density of *Cycas megacarpa*

- Absent (0 - 1)
- Low (1 - 10)
- Moderate (10 - 25)
- High (25-50)

**FIGURE 7.1B**

**CYCAS MEGACARPA MODELLED DENSITY**





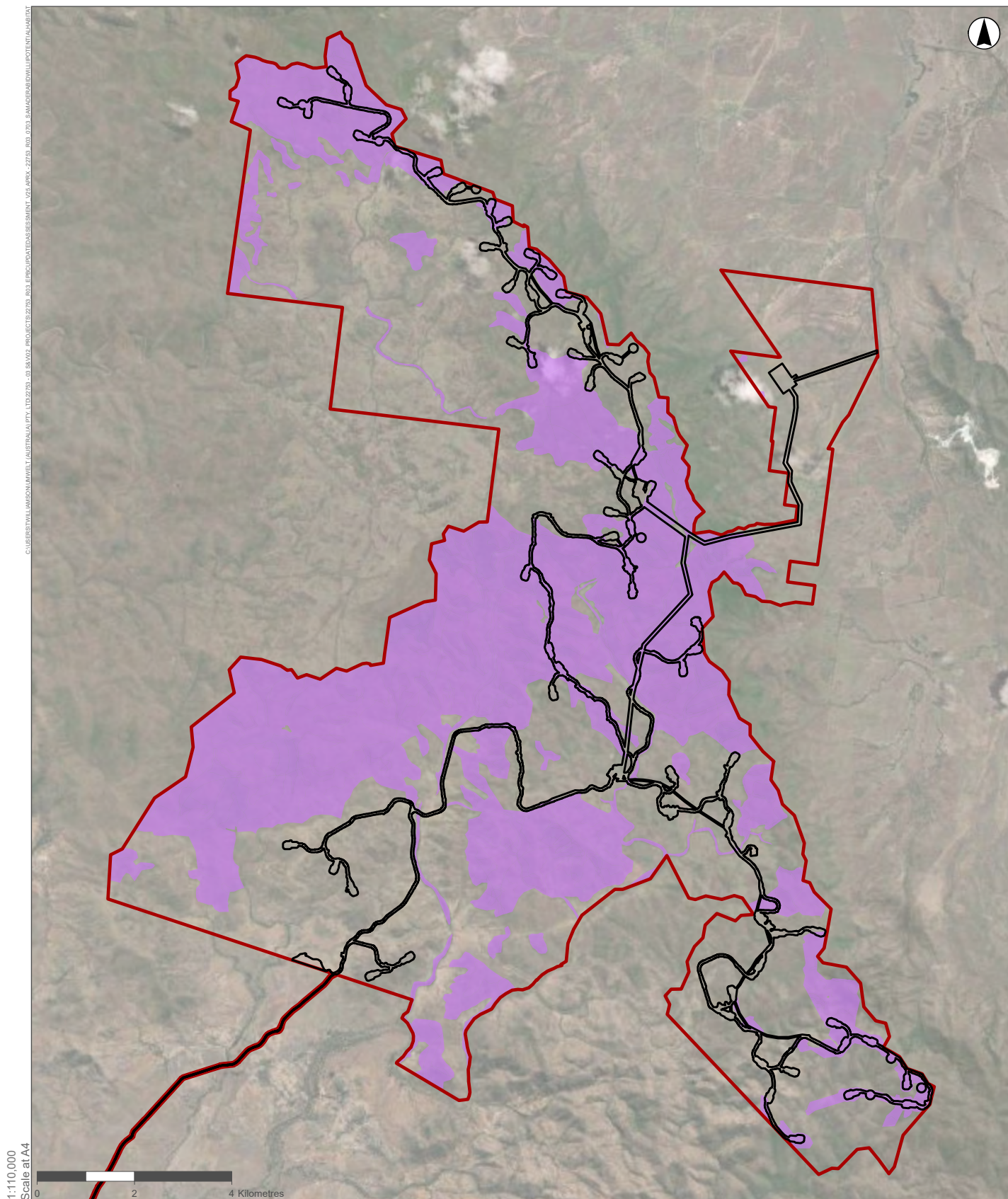
# Legend

- *Cossinia australiana* Record (ALA)
- Disturbance Footprint
- Study Area
- Cossinia australiana* Potential Habitat

**FIGURE 7.2**

**COSSINIA AUSTRALIANA  
POTENTIAL HABITAT**





# Legend




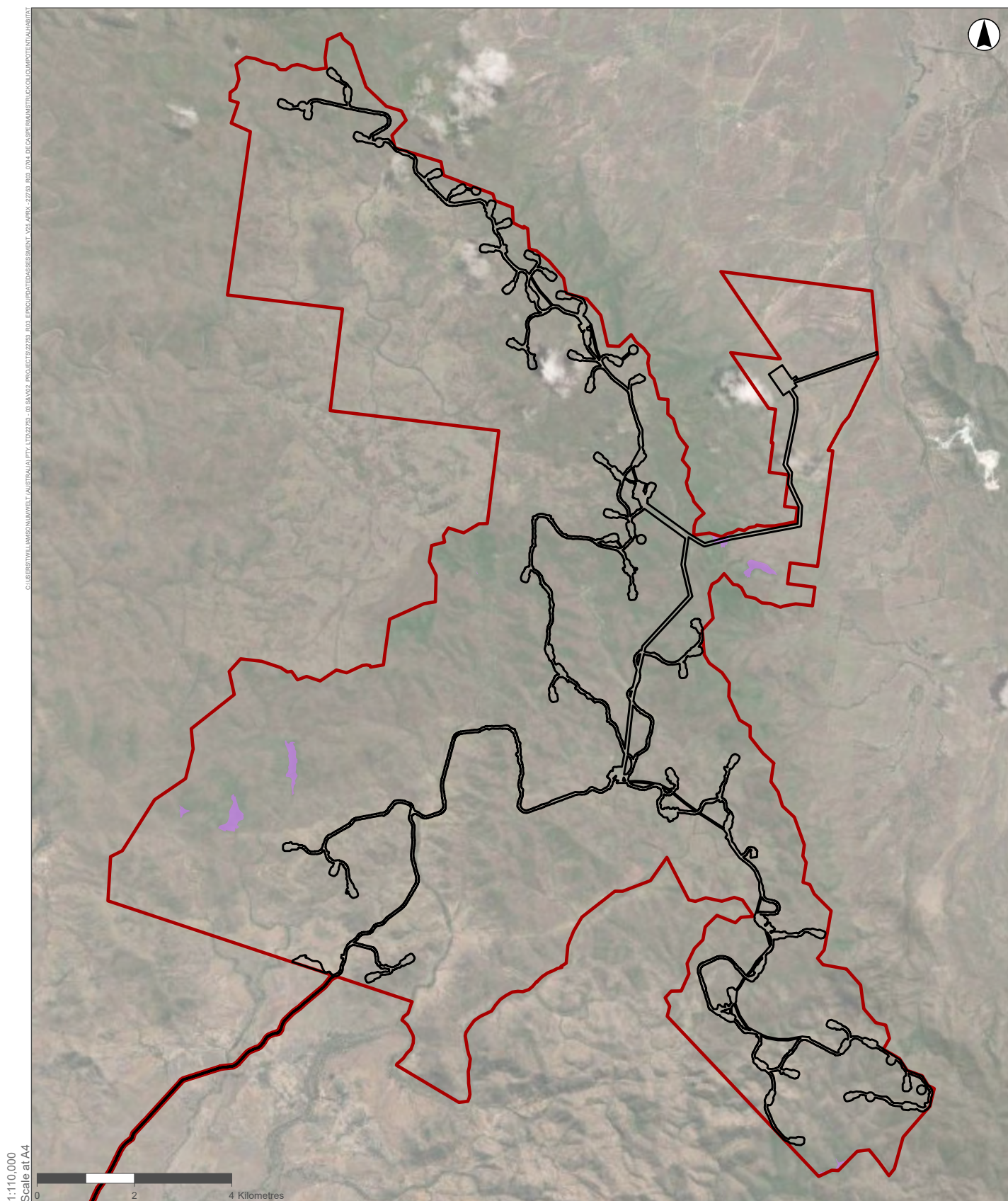
-  Disturbance Footprint
-  Study Area
-  *Samadera bidwillii* Potential Habitat

FIGURE 7.3

SAMADERA BIDWILLII POTENTIAL HABITAT





#### Legend

- Disturbance Footprint
- Study Area
- Decaspermum struckoilocum* Potential Habitat

**FIGURE 7.4**

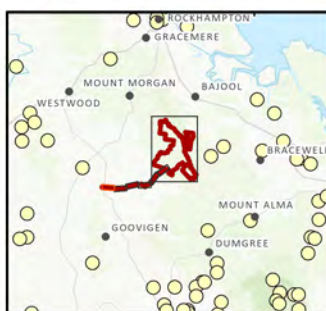
***DECASPERMUM STRUCKOILICUM***  
**POTENTIAL HABITAT**





### Legend

- Koala Record (ALA)
- Disturbance Footprint
- Study Area
- Potential Koala Habitat**
- Breeding, Foraging and Dispersal
- Climate Refugia



GDA 1994 MGA Zone 56

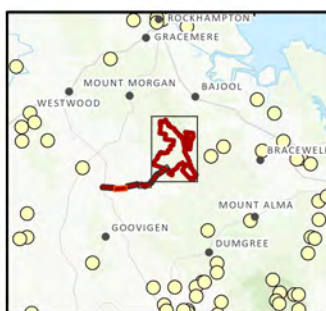
**FIGURE 7.5A**  
**KOALA POTENTIAL HABITAT**





### Legend

- Koala Record (ALA)
- Disturbance Footprint
- Study Area
- Potential Koala Habitat**
  - Breeding, Foraging and Dispersal
  - Climate Refugia



GDA 1994 MGA Zone 56

**FIGURE 7.5B**  
KOALA POTENTIAL HABITAT

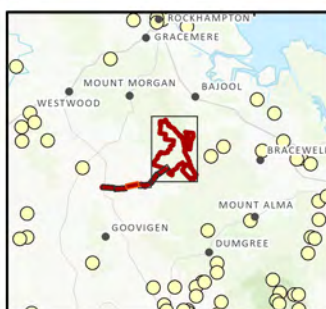




GDA 1994 MGA Zone 56

### Legend

- Koala Record (ALA)
- Disturbance Footprint
- Study Area
- Potential Koala Habitat**
- Breeding, Foraging and Dispersal
- Climate Refugia



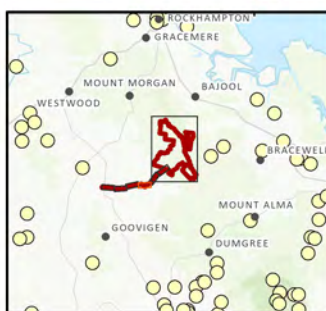
**FIGURE 7.5C**  
KOALA POTENTIAL HABITAT





### Legend

- Koala Record (ALA)
- Disturbance Footprint
- Study Area
- Potential Koala Habitat**
- Breeding, Foraging and Dispersal
- Climate Refugia



**FIGURE 7.5D**  
**KOALA POTENTIAL HABITAT**

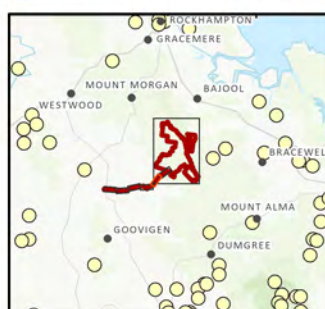




GDA 1994 MGA Zone 56

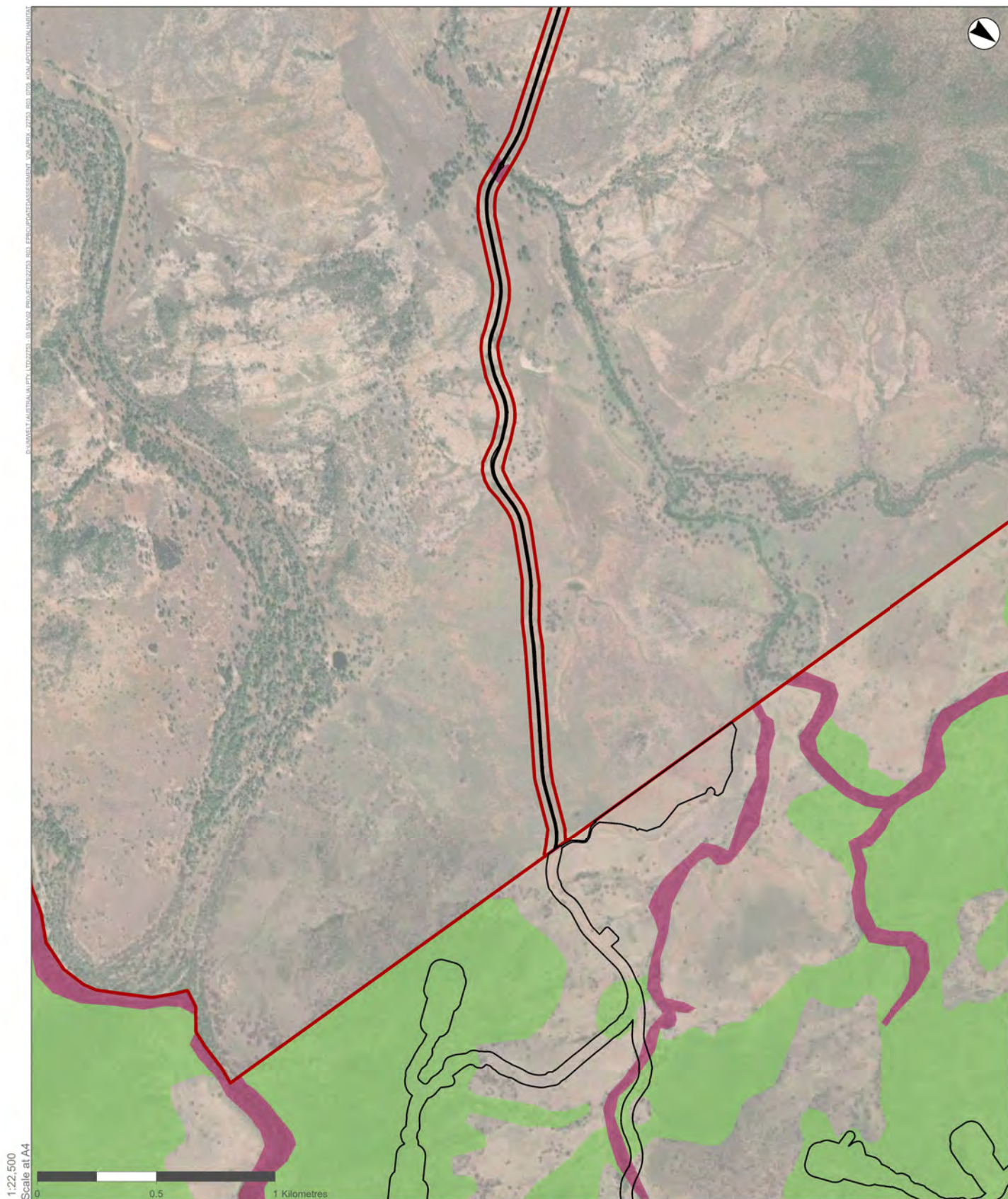
### Legend

- Koala Record (ALA)
- Disturbance Footprint
- Study Area
- Potential Koala Habitat**
- Breeding, Foraging and Dispersal
- Climate Refugia



**FIGURE 7.5E**  
KOALA POTENTIAL HABITAT



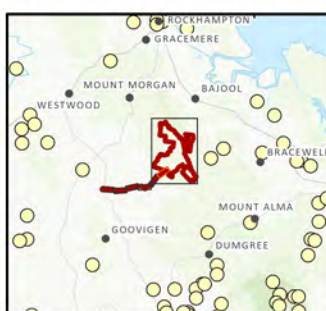


1:22,500  
Scale at A4

GDA 1994 MGA Zone 56

### Legend

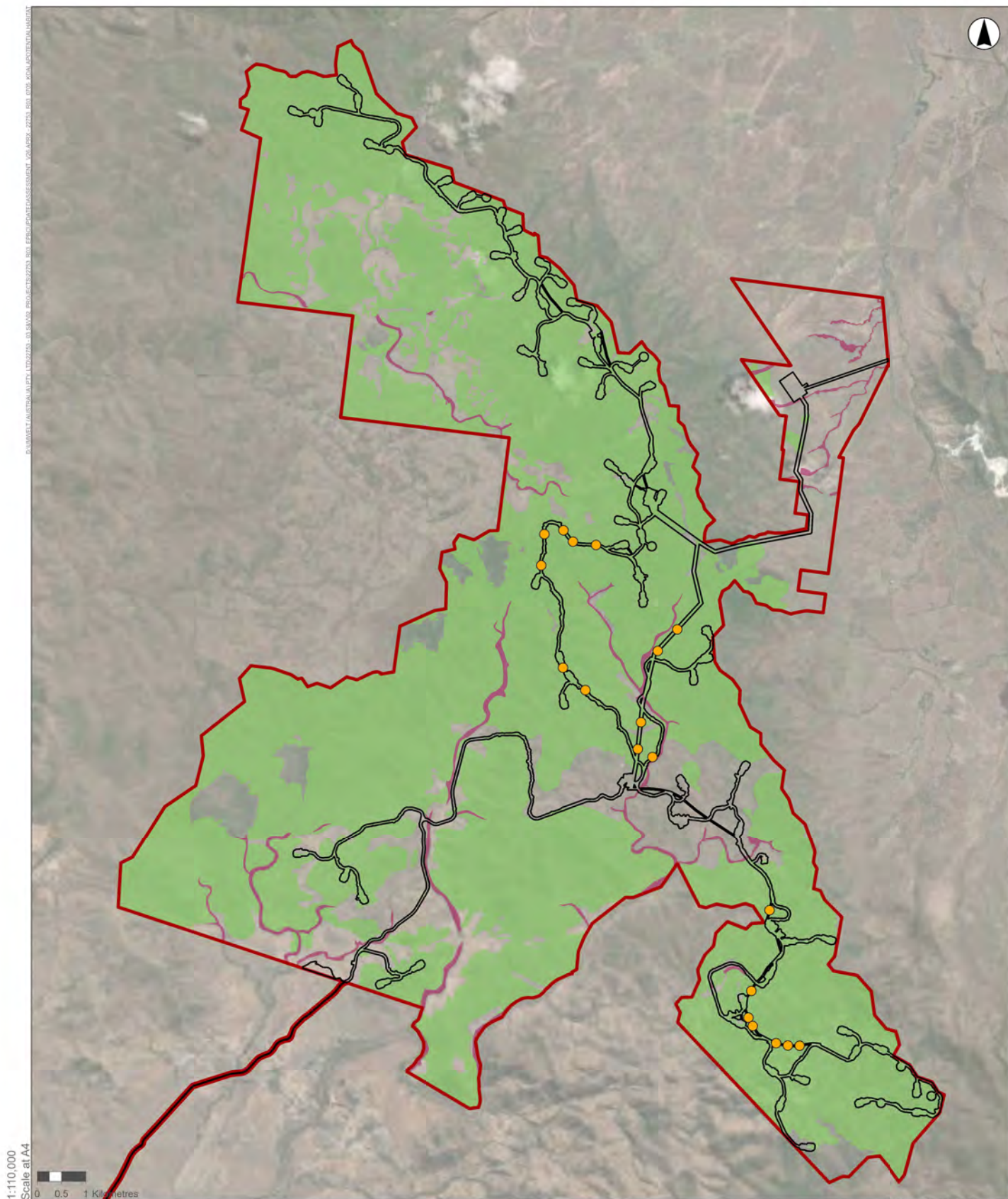
- Koala Record (ALA)
- Disturbance Footprint
- Study Area
- Potential Koala Habitat**
- Breeding, Foraging and Dispersal
- Climate Refugia



**FIGURE 7.5F**

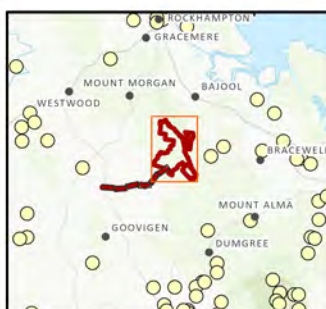
**KOALA POTENTIAL HABITAT**





### Legend

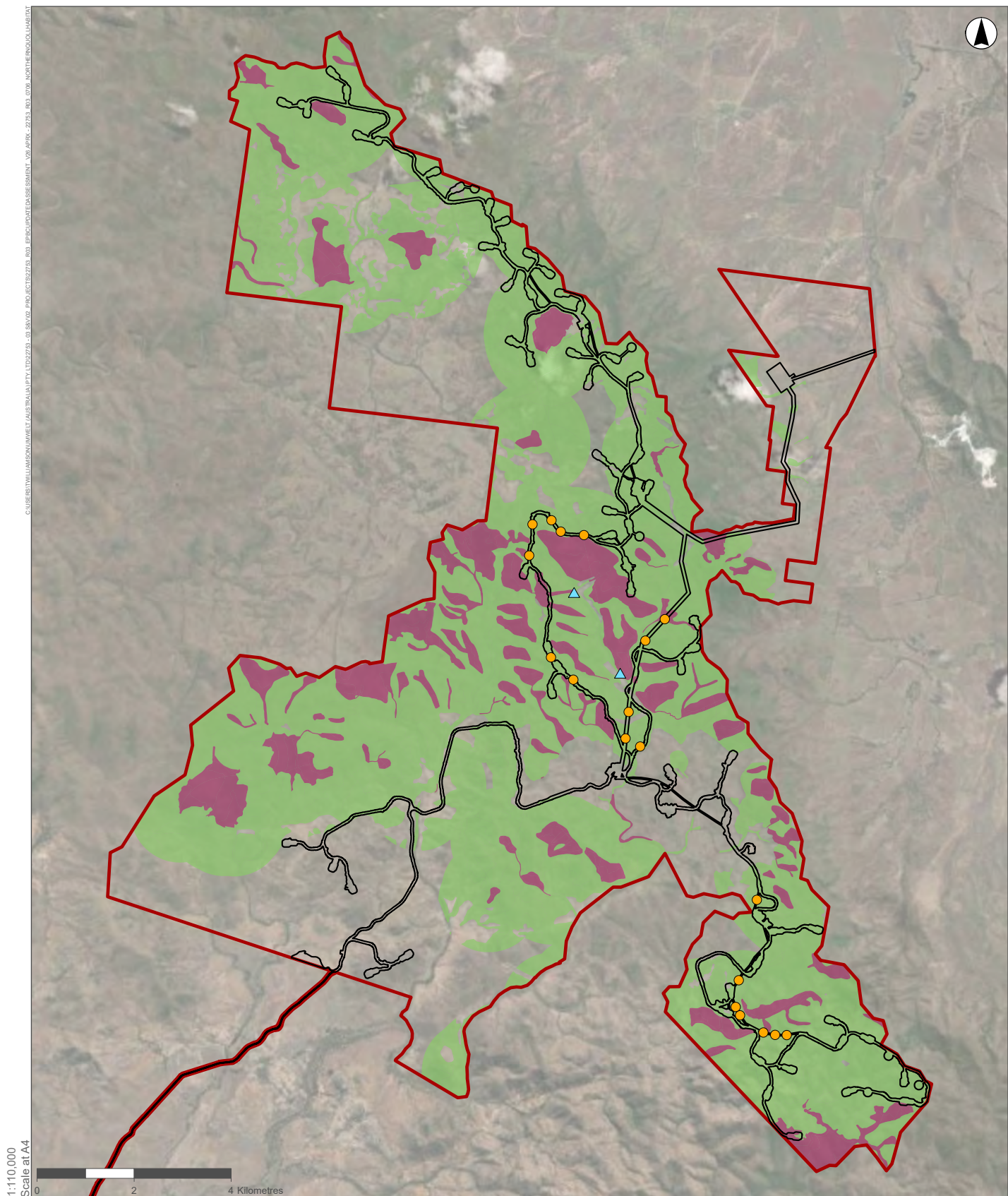
- Pinch Points
- Koala Record (ALA)
- Disturbance Footprint
- Study Area
- Potential Koala Habitat**
  - Breeding, Foraging and Dispersal
  - Climate Refugia



GDA 1994 MGA Zone 56

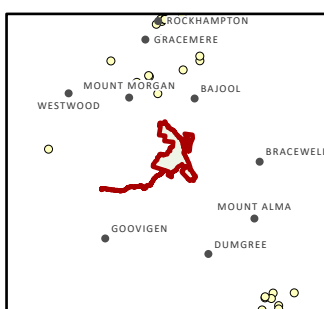
**FIGURE 7.5G**  
**KOALA POTENTIAL HABITAT**





#### Legend

- Pinch Points
- ▲ Northern Quoll Records (Umwelt)
- Northern Quoll Record (ALA)
- Disturbance Footprint
- Study Area
- Northern Quoll Habitat**
  - Foraging and Dispersal
  - Denning and Refuge



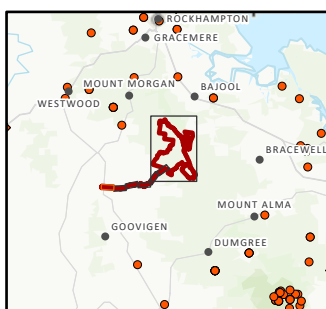
**FIGURE 7.6**  
**NORTHERN QUOLL HABITAT**





# Legend

- Mountains, Peaks and Capes (DoR)
- White-throated Needletail Record (Umwelt)
- White-throated Needletail Record (ALA)
- Vantage Point Sites
- Mountain Range (DoR)
- Disturbance Footprint
- Study Area
- White-throated Needletail Habitat**
  - Foraging and dispersal
  - Roosting and foraging



GDA 1994 MGA Zone 56

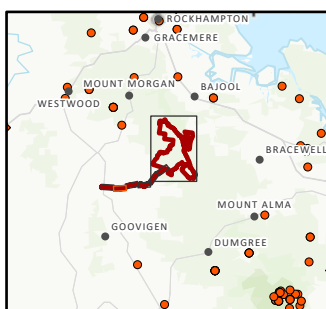
**FIGURE 7.7A**  
**WHITE-THROATED NEEDLETAIL HABITAT**





### Legend

- Mountains, Peaks and Capes (DoR)
- White-throated Needletail Record (Umwelt)
- White-throated Needletail Record (ALA)
- Vantage Point Sites
- Mountain Range (DoR)
- Disturbance Footprint
- Study Area
- White-throated Needletail Habitat**
  - Foraging and dispersal
  - Roosting and foraging



GDA 1994 MGA Zone 56

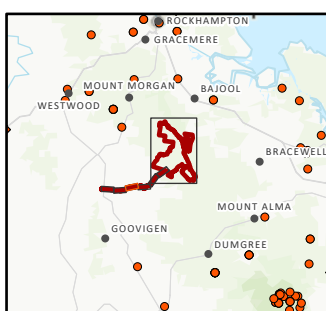
**FIGURE 7.7B**  
**WHITE-THROATED NEEDLETAIL HABITAT**





## Legend

- Mountains, Peaks and Capes (DoR)
- White-throated Needletail Record (Umwelt)
- White-throated Needletail Record (ALA)
- Vantage Point Sites
- Mountain Range (DoR)
- Disturbance Footprint
- Study Area
- White-throated Needletail Habitat**
  - Foraging and dispersal
  - Roosting and foraging



GDA 1994 MGA Zone 56

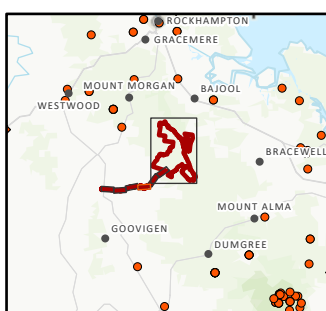
**FIGURE 7.7C**  
**WHITE-THROATED NEEDLETAIL HABITAT**





### Legend

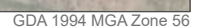
- Mountains, Peaks and Capes (DoR)
- White-throated Needle-tail Record (Umwelt)
- White-throated Needle-tail Record (ALA)
- Vantage Point Sites
- Mountain Range (DoR)
- Disturbance Footprint
- Study Area
- White-throated Needle-tail Habitat**
  - Foraging and dispersal
  - Roosting and foraging



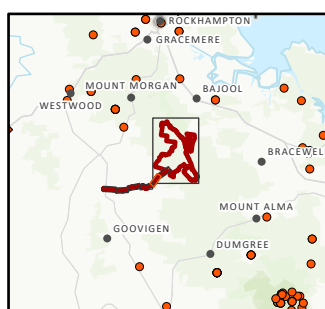
GDA 1994 MGA Zone 56

**FIGURE 7.7D**  
**WHITE-THROATED NEEDLETAIL**  
**HABITAT**



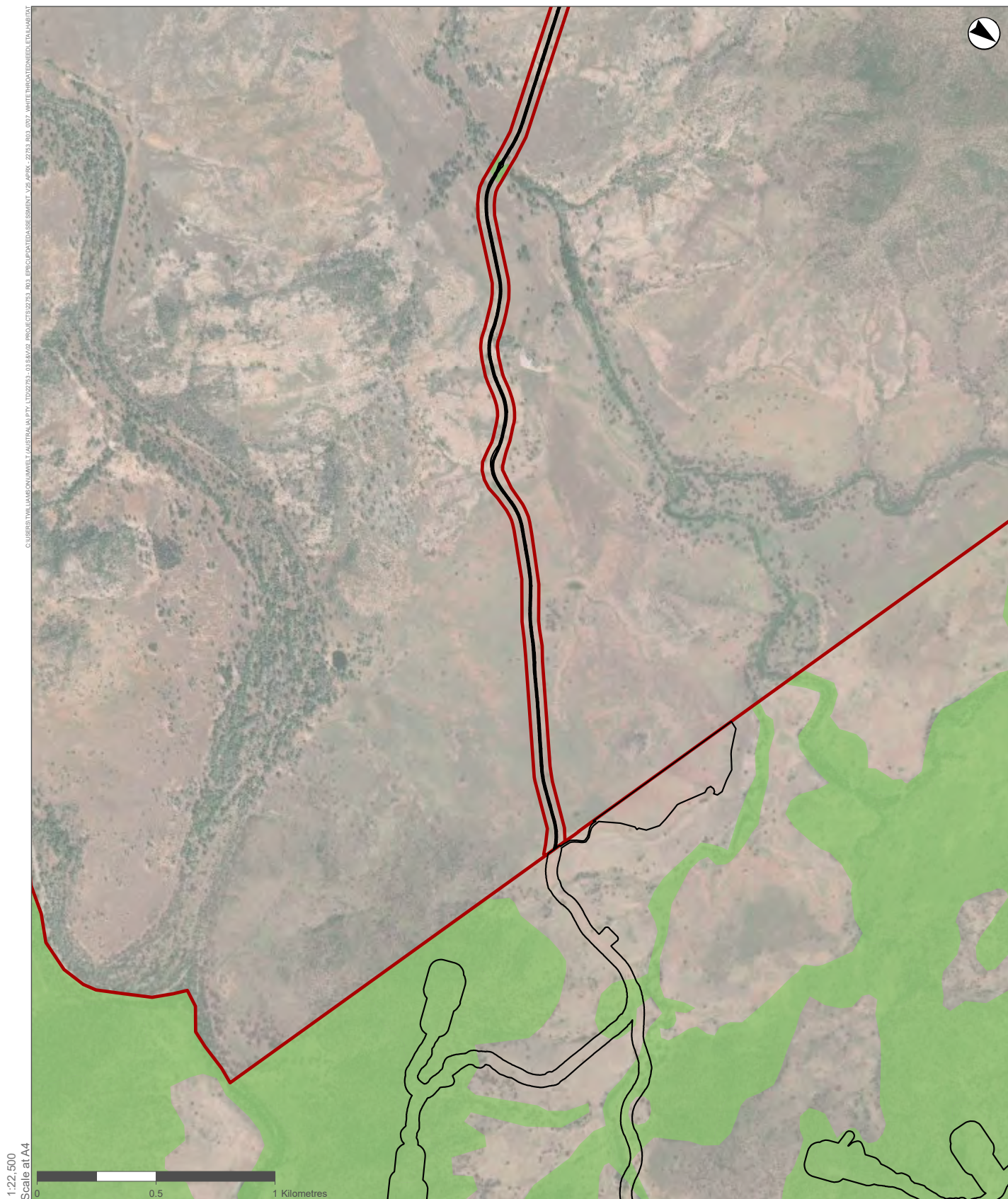


**White-throated Needletail Habitat**



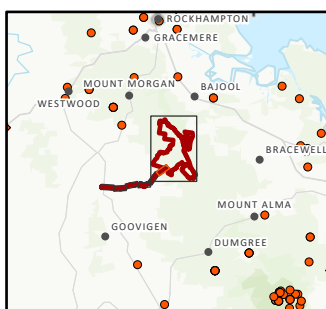
**Image Source:** ESRI Basemap (2022) **Data source:** Department of Resources (2022)





# Legend

- ✕ Mountains, Peaks and Capes (DoR)
- ▲ White-throated Needletail Record (Umwelt)
- White-throated Needletail Record (ALA)
- Vantage Point Sites
- Mountain Range (DoR)
- ▭ Disturbance Footprint
- ▭ Study Area
- White-throated Needletail Habitat**
  - Foraging and dispersal
  - Roosting and foraging

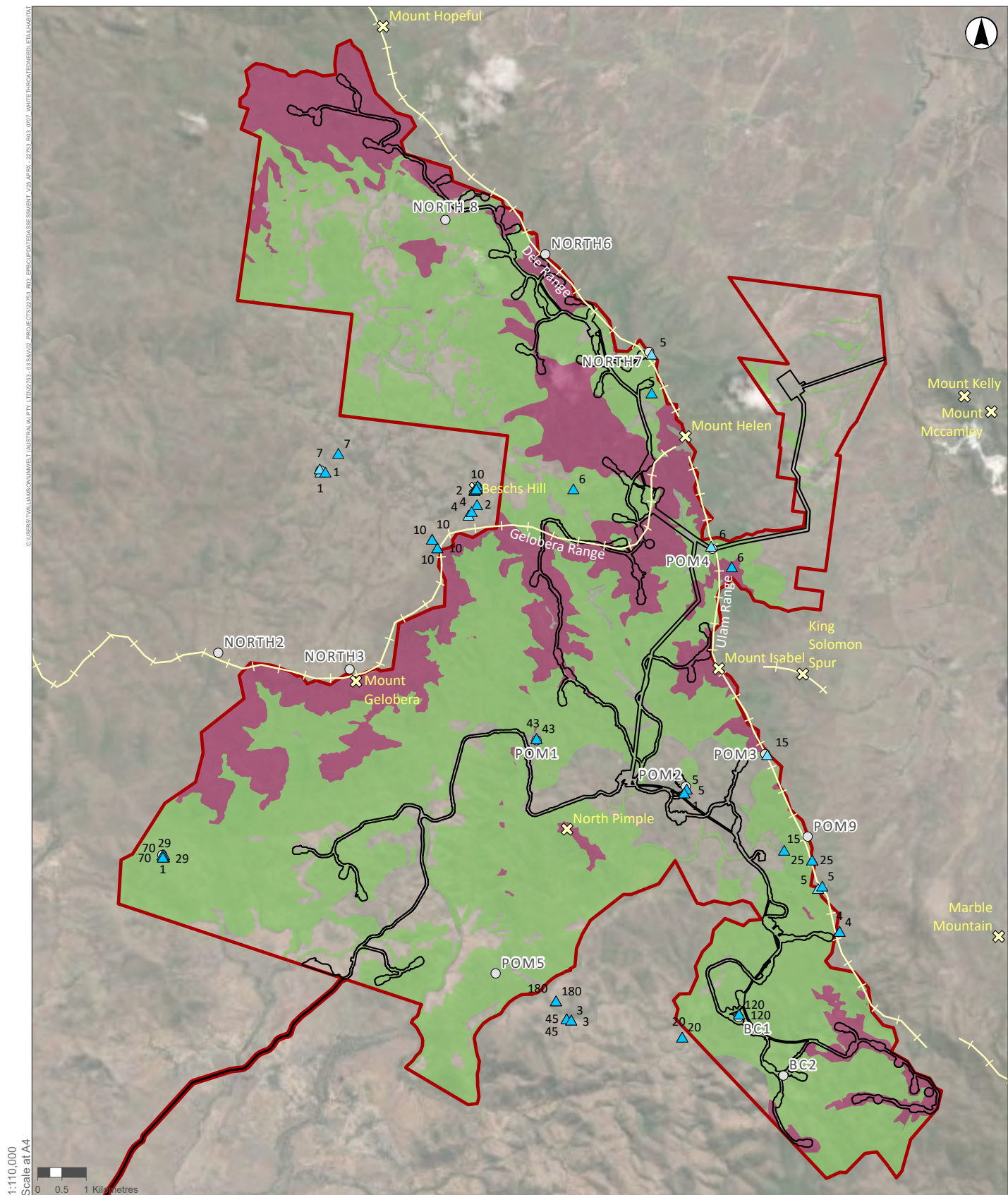


GDA 1994 MGA Zone 56

**FIGURE 7.7F**

**WHITE-THROATED NEEDLETAIL HABITAT**

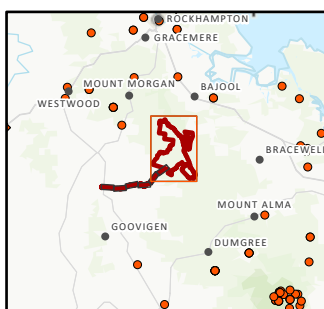




GDA 1994 MGA Zone 56

## Legend

- Mountains, Peaks and Capes (DoR)
- White-throated Needletail Record (Umwelt)
- White-throated Needletail Record (ALA)
- Vantage Point Sites
- Mountain Range (DoR)
- Disturbance Footprint
- Study Area
- White-throated Needletail Habitat**
  - Foraging and dispersal
  - Roosting and foraging



**FIGURE 7.7G**  
**WHITE-THROATED NEEDLETAIL**  
**HABITAT**



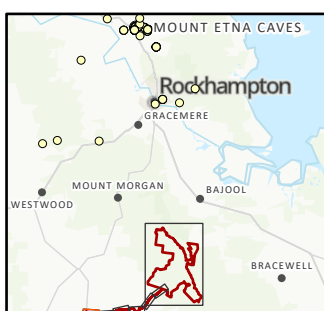


1:22,500  
Scale at A4

GDA 1994 MGA Zone 56

### Legend

- Ghost Bat Record (ALA)
- Disturbance Footprint
- Study Area
- Potential Ghost Bat Habitat**
- Seasonal Foraging and Dispersal



**FIGURE 7.8A**  
GHOST BAT POTENTIAL HABITAT



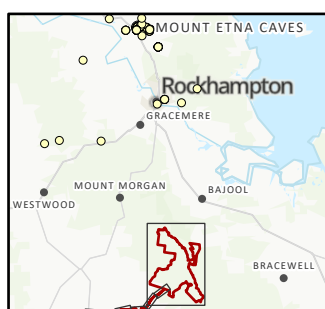
1:22,500  
Scale at A4



GDA 1994 MGA Zone 56

#### Legend

- Ghost Bat Record (ALA)
- Disturbance Footprint
- Study Area
- Potential Ghost Bat Habitat**
- Seasonal Foraging and Dispersal



**FIGURE 7.8B**  
GHOST BAT POTENTIAL HABITAT





C:\BIBERSTVAL\WILSON\UMWELT\AUSTRALIA\PTV\170227203\_03\_SAV02\_PROJECTS\27219\_R03\_EPC\UPDATE\ASSESSMENT\_V2\LAAPKX-27219\_R03\_0708\_GHOSTBATPOTENTIALHABITAT

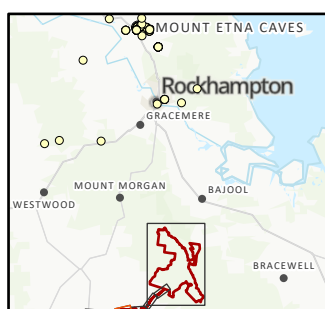
1:22,500  
Scale at A4



GDA 1994 MGA Zone 56

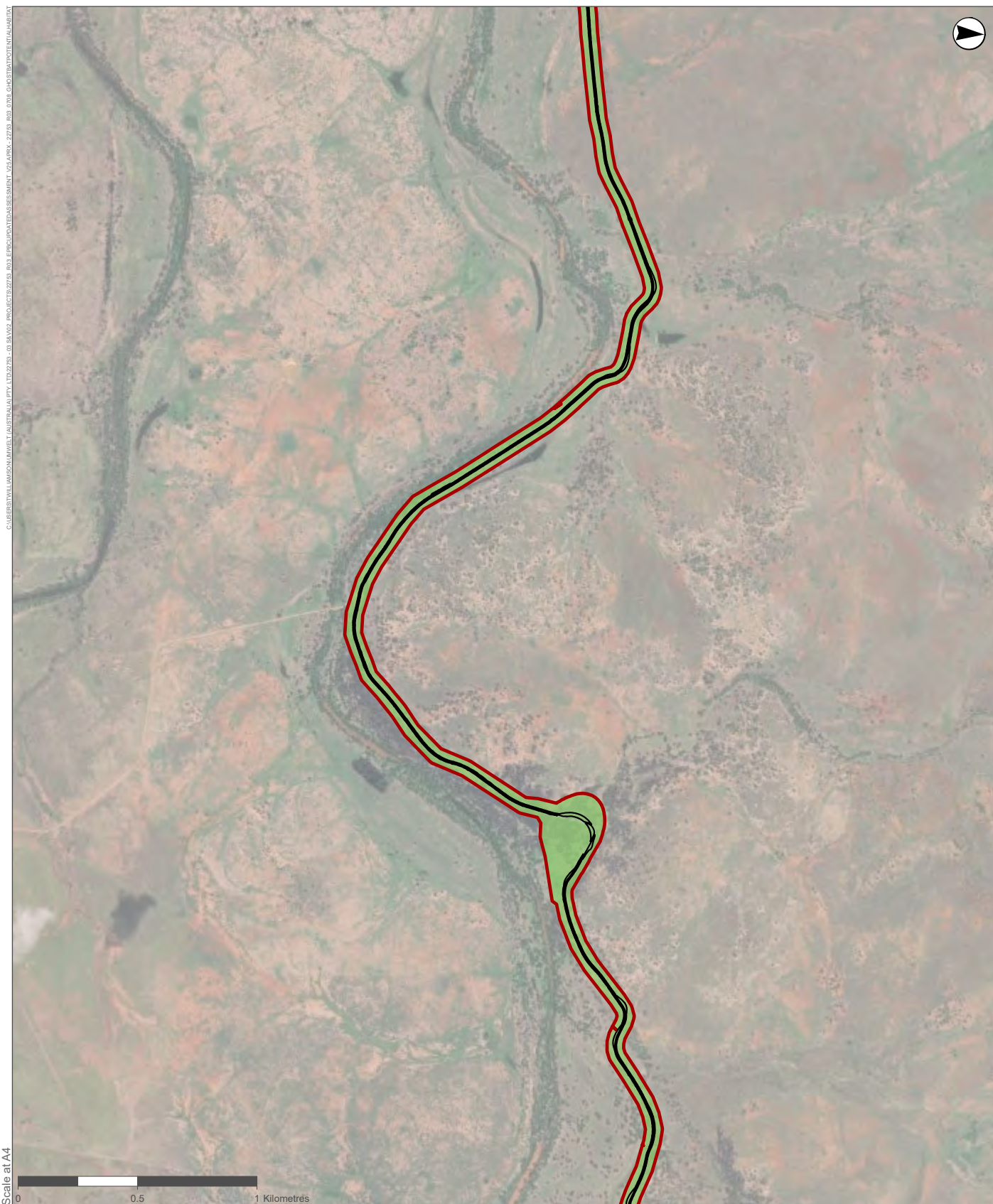
#### Legend

- Ghost Bat Record (ALA)
- Disturbance Footprint
- Study Area
- Potential Ghost Bat Habitat**
- Seasonal Foraging and Dispersal



**FIGURE 7.8C**  
GHOST BAT POTENTIAL HABITAT



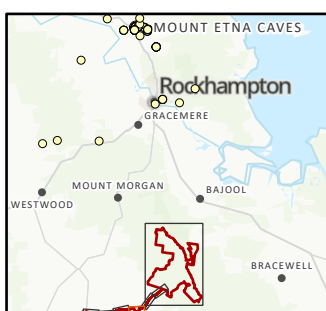


1:22,500  
Scale at A4

GDA 1994 MGA Zone 56

### Legend

- Ghost Bat Record (ALA)
- Disturbance Footprint
- Study Area
- Potential Ghost Bat Habitat**
- Seasonal Foraging and Dispersal



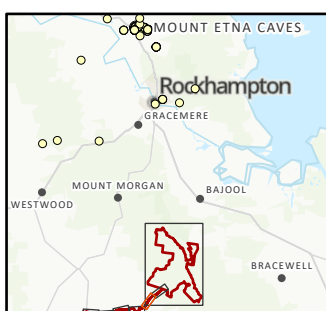
**FIGURE 7.8D**  
GHOST BAT POTENTIAL HABITAT





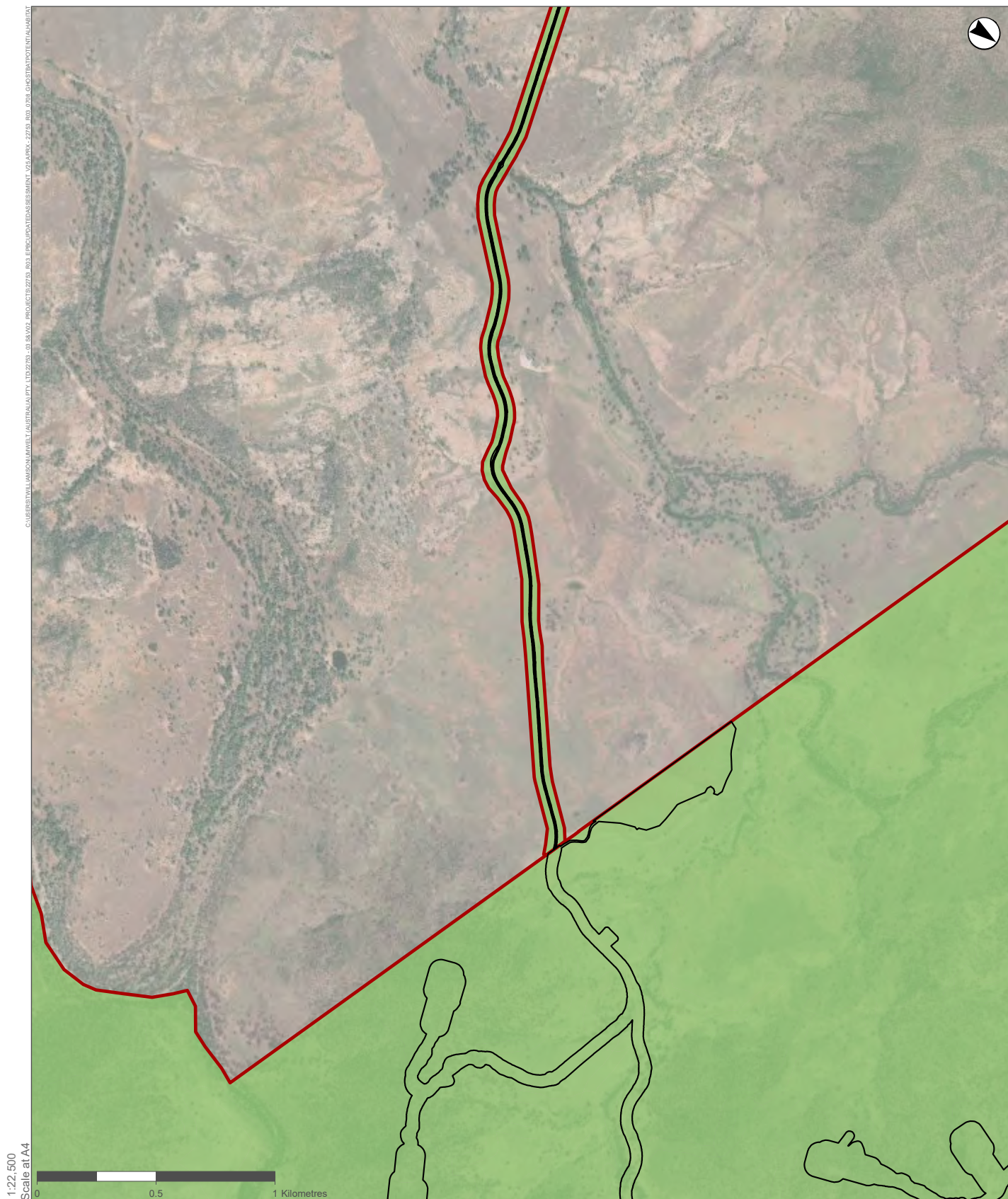
#### Legend

- Ghost Bat Record (ALA)
- Disturbance Footprint
- Study Area
- Potential Ghost Bat Habitat**
- Seasonal Foraging and Dispersal



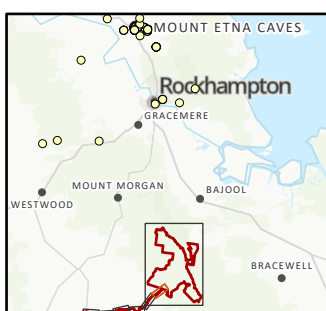
**FIGURE 7.8E**  
**GHOST BAT POTENTIAL HABITAT**





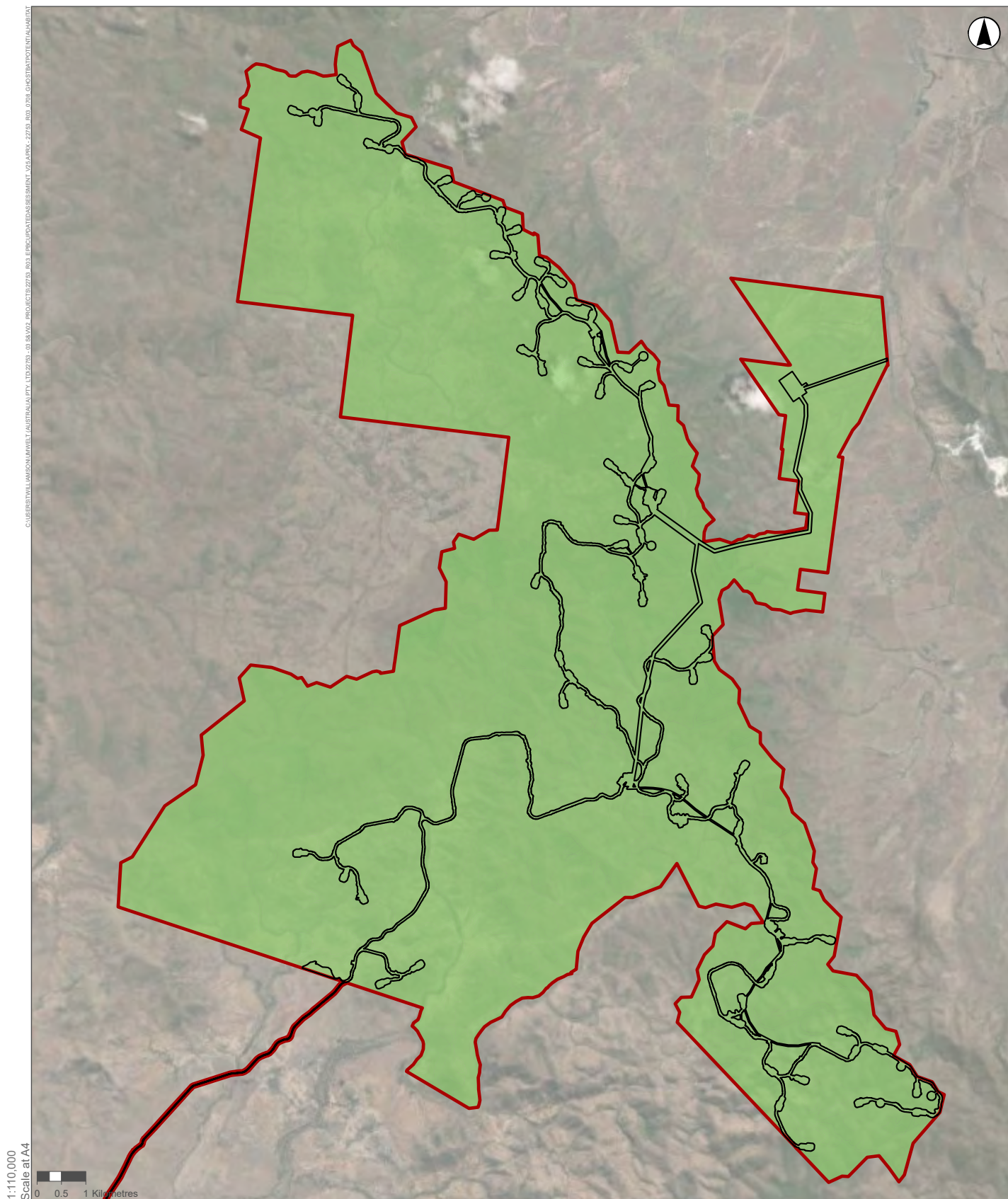
#### Legend

- Ghost Bat Record (ALA)
- Disturbance Footprint
- Study Area
- Potential Ghost Bat Habitat**
- Seasonal Foraging and Dispersal



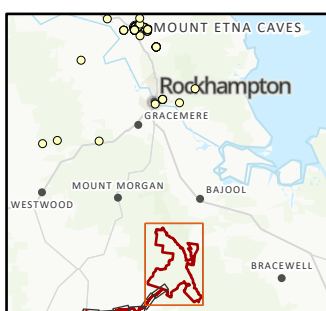
**FIGURE 7.8F**  
**GHOST BAT POTENTIAL HABITAT**





#### Legend

- Ghost Bat Record (ALA)
- Disturbance Footprint
- Study Area
- Potential Ghost Bat Habitat**
- Seasonal Foraging and Dispersal



GDA 1994 MGA Zone 56

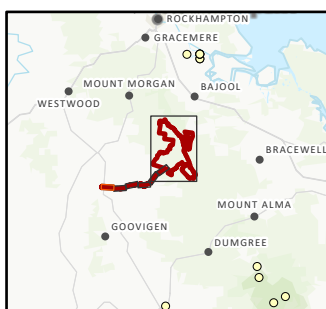
**FIGURE 7.8G**  
**GHOST BAT POTENTIAL HABITAT**





### Legend

- ▲ Greater Glider (Southern and Central) Record (Umwelt)
- Greater Glider (Southern and Central) Record (ALA)
- ▭ Disturbance Footprint
- ▭ Study Area
- Greater Glider (Southern and Central) Habitat**
  - Foraging and dispersal
  - Likely / current denning



GDA 1994 MGA Zone 56

**FIGURE 7.9A**

**GREATER GLIDER (SOUTHERN AND CENTRAL) HABITAT**



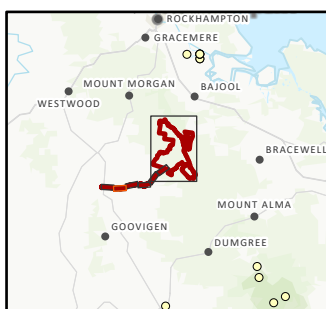


1:22,500  
Scale at A4

GDA 1994 MGA Zone 56

### Legend

- ▲ Greater Glider (Southern and Central) Record (Umwelt)
- Greater Glider (Southern and Central) Record (ALA)
- ▭ Disturbance Footprint
- ▭ Study Area
- Greater Glider (Southern and Central) Habitat**
  - Foraging and dispersal
  - Likely / current denning



**FIGURE 7.9B**

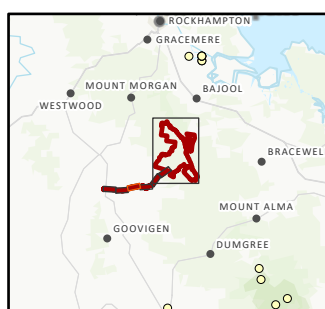
**GREATER GLIDER (SOUTHERN AND CENTRAL) HABITAT**





### Legend

- ▲ Greater Glider (Southern and Central) Record (Umwelt)
- Greater Glider (Southern and Central) Record (ALA)
- ▭ Disturbance Footprint
- ▭ Study Area
- Greater Glider (Southern and Central) Habitat**
- Foraging and dispersal
- Likely / current denning



GDA 1994 MGA Zone 56

**FIGURE 7.9C**

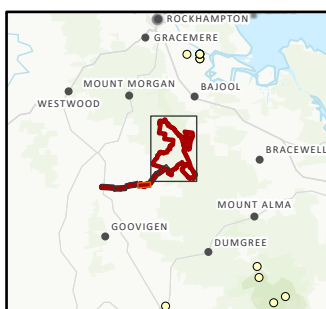
**GREATER GLIDER (SOUTHERN AND CENTRAL) HABITAT**





#### Legend

- ▲ Greater Glider (Southern and Central) Record (Umwelt)
- Greater Glider (Southern and Central) Record (ALA)
- ▬ Disturbance Footprint
- ▭ Study Area
- Greater Glider (Southern and Central) Habitat**
  - Foraging and dispersal
  - Likely / current denning



GDA 1994 MGA Zone 56

**FIGURE 7.9D**

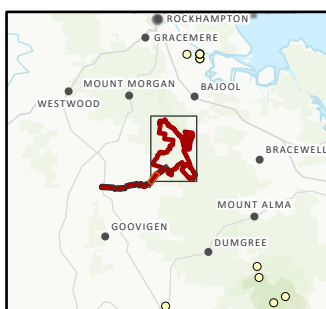
**GREATER GLIDER (SOUTHERN AND CENTRAL) HABITAT**





#### Legend

- ▲ Greater Glider (Southern and Central) Record (Umwelt)
- Greater Glider (Southern and Central) Record (ALA)
- ▭ Disturbance Footprint
- ▭ Study Area
- Greater Glider (Southern and Central) Habitat**
- Foraging and dispersal

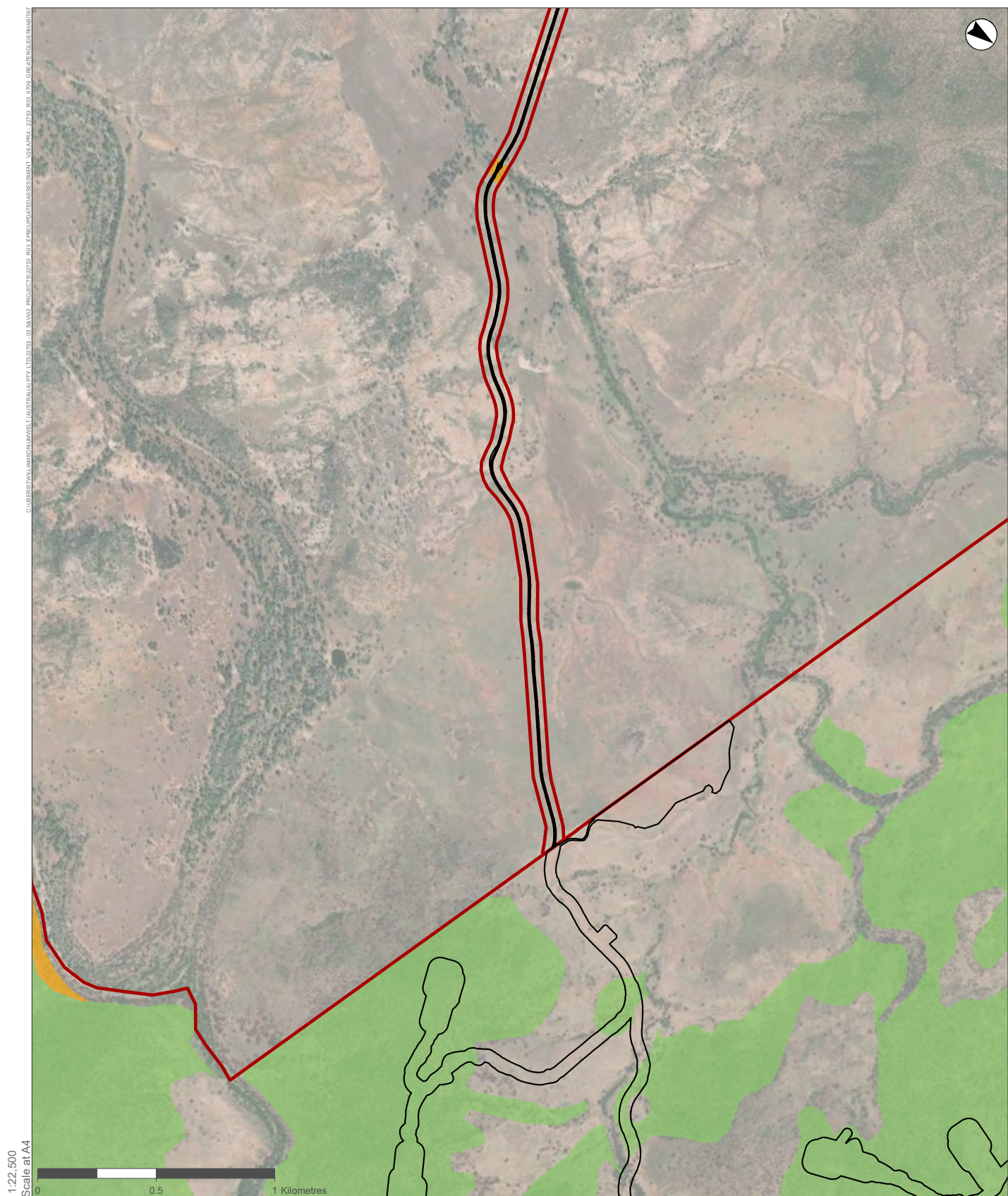


GDA 1994 MGA Zone 56

**FIGURE 7.9E**

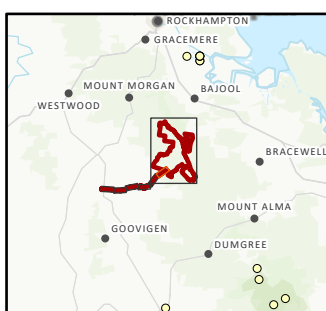
**GREATER GLIDER (SOUTHERN AND CENTRAL) HABITAT**





### Legend

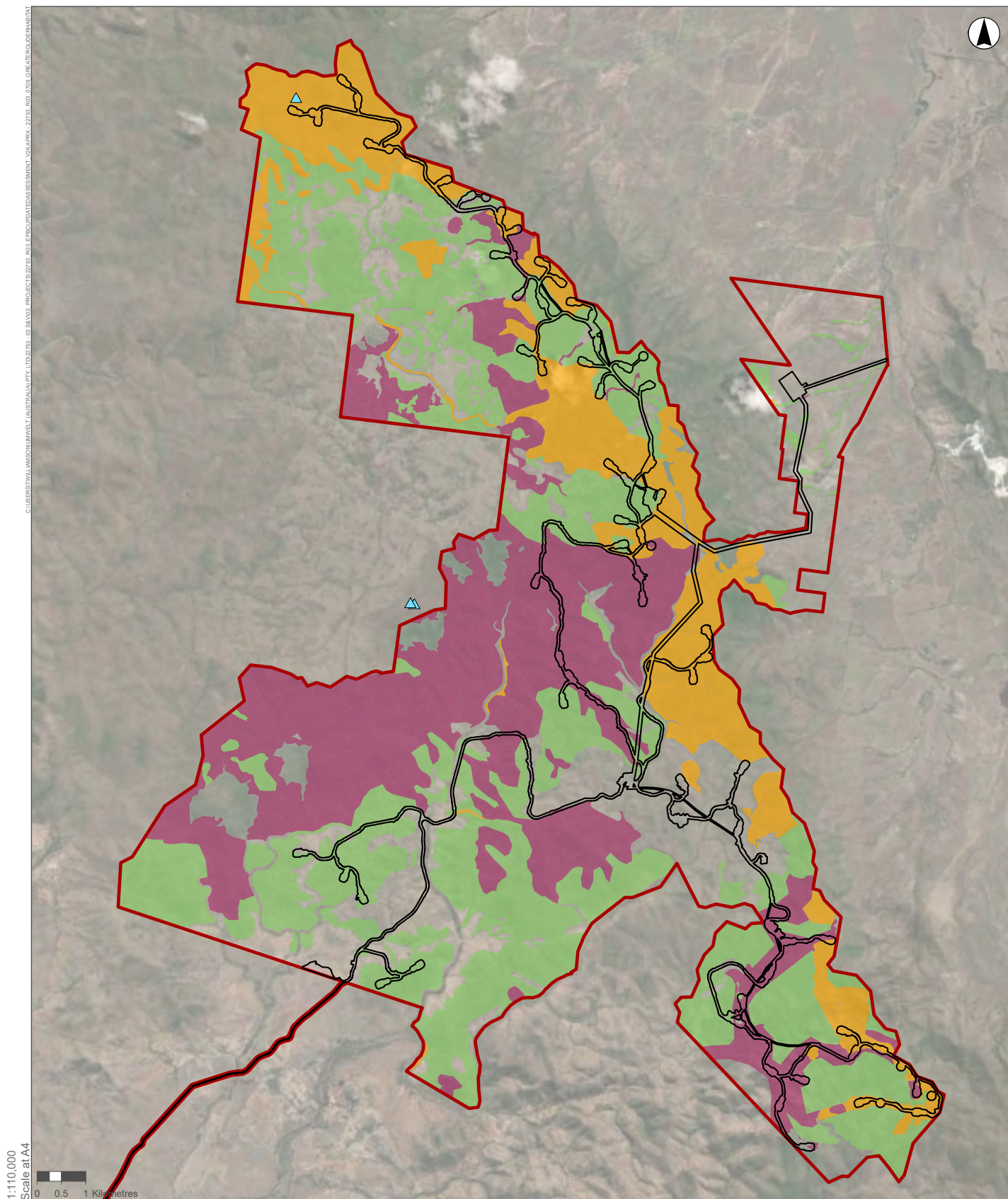
- ▲ Greater Glider (Southern and Central) Record (Umwelt)
  - Greater Glider (Southern and Central) Record (ALA)
  - ▭ Disturbance Footprint
  - ▭ Study Area
- Greater Glider (Southern and Central) Habitat**
- Foraging and dispersal
  - Likely / current denning



**FIGURE 7.9F**

**GREATER GLIDER (SOUTHERN AND CENTRAL) HABITAT**





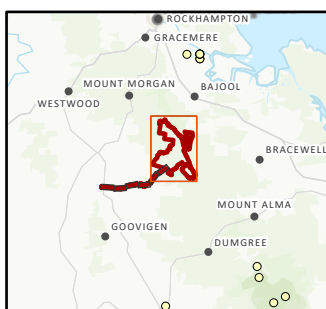
1:110,000  
Scale at A4

0 0.5 1 Kilometres

GDA 1994 MGA Zone 56

### Legend

- ▲ Greater Glider (Southern and Central) Record (Umwelt)
- Greater Glider (Southern and Central) Record (ALA)
- Disturbance Footprint
- Study Area
- Greater Glider (Southern and Central) Habitat**
  - Foraging and dispersal
  - Likely / current denning
  - Potential future / denning



**FIGURE 7.9G**

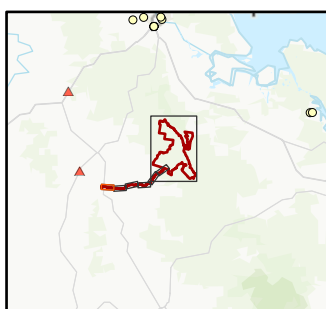
**GREATER GLIDER (SOUTHERN AND CENTRAL) HABITAT**





#### Legend

- Grey-headed Flying-fox Record (ALA)
- ▲ Roost (National Flying-fox Monitoring Program)
- ▭ Disturbance Footprint
- ▭ Study Area
- Potential Grey-headed Flying-fox Habitat**
- Foraging and Dispersal



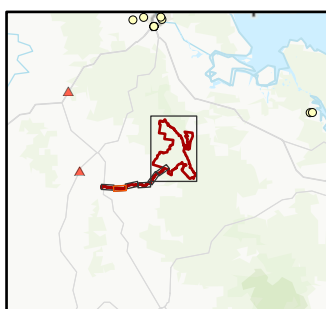
**FIGURE 7.10A**  
**GREY-HEADED FLYING-FOX**  
**POTENTIAL HABITAT**





### Legend

- Grey-headed Flying-fox Record (ALA)
- ▲ Roost (National Flying-fox Monitoring Program)
- ▭ Disturbance Footprint
- ▭ Study Area
- Potential Grey-headed Flying-fox Habitat**
- Foraging and Dispersal



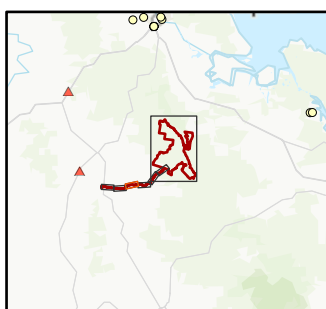
**FIGURE 7.10B**  
GREY-HEADED FLYING-FOX  
POTENTIAL HABITAT





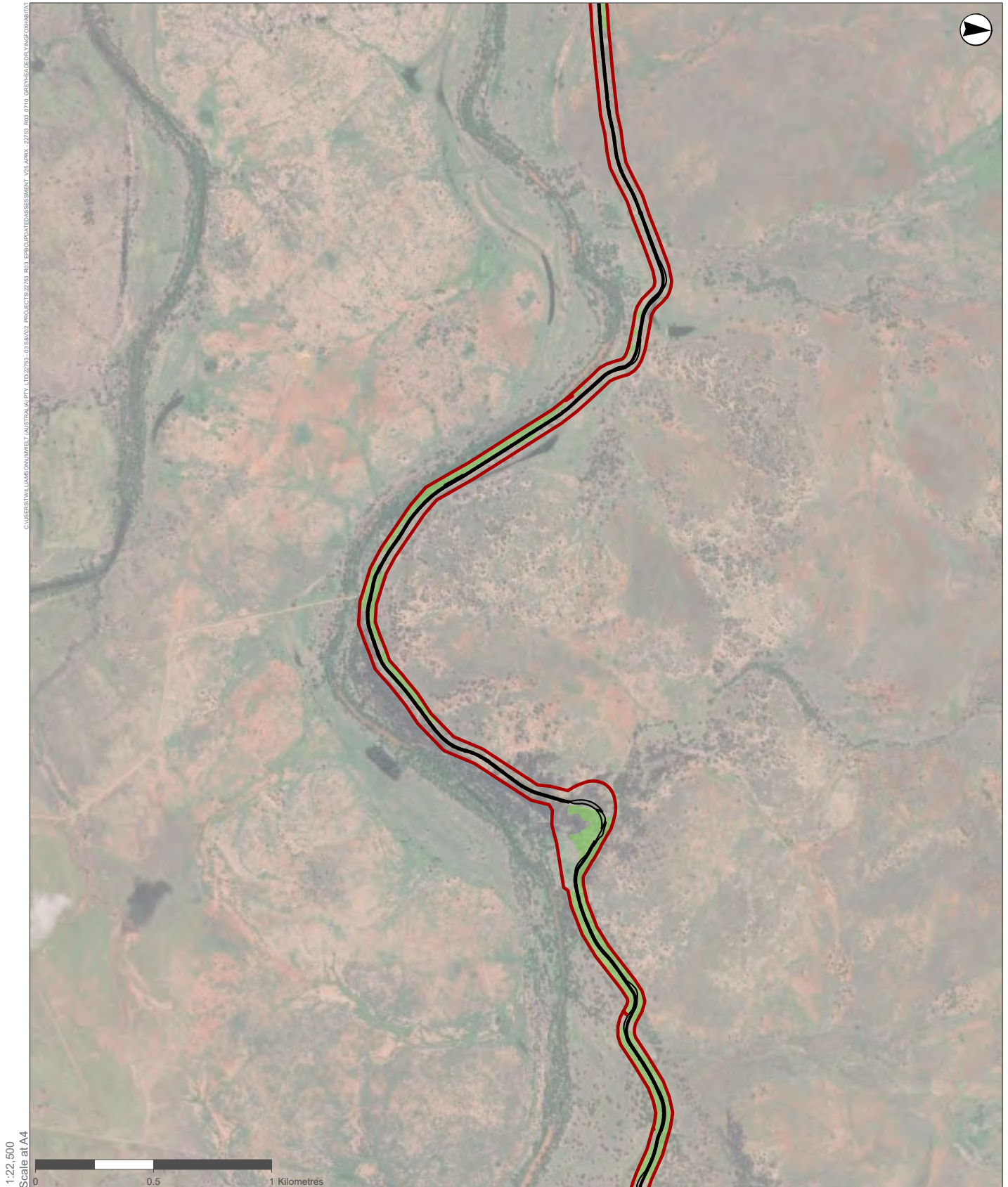
#### Legend

- Grey-headed Flying-fox Record (ALA)
- ▲ Roost (National Flying-fox Monitoring Program)
- ▭ Disturbance Footprint
- ▭ Study Area
- Potential Grey-headed Flying-fox Habitat**
- Foraging and Dispersal



**FIGURE 7.10C**  
GREY-HEADED FLYING-FOX  
POTENTIAL HABITAT



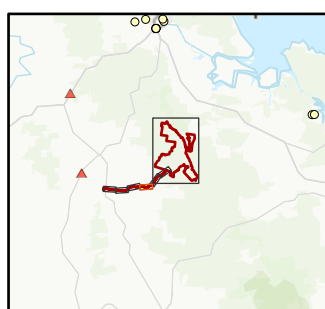


1:22,500  
Scale at A4

GDA 1994 MGA Zone 56

#### Legend

- Grey-headed Flying-fox Record (ALA)
- ▲ Roost (National Flying-fox Monitoring Program)
- ▭ Disturbance Footprint
- ▭ Study Area
- Potential Grey-headed Flying-fox Habitat**
- Foraging and Dispersal



**FIGURE 7.10D**

**GREY-HEADED FLYING-FOX  
POTENTIAL HABITAT**

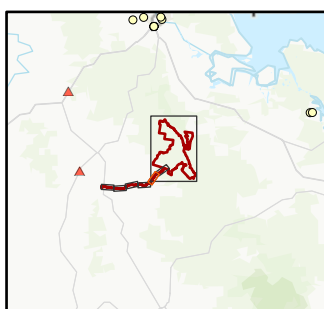




GDA 1994 MGA Zone 56

#### Legend

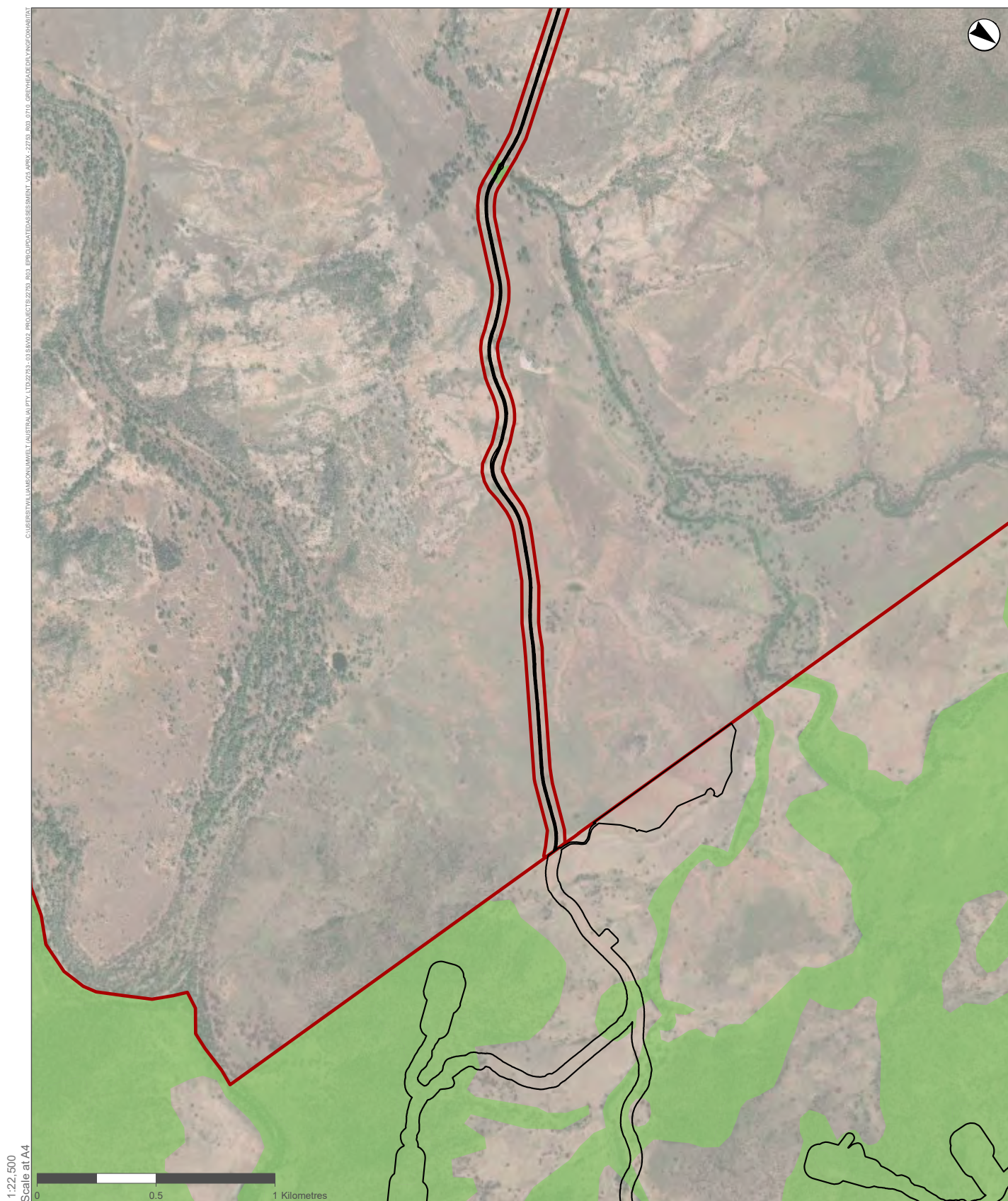
- Grey-headed Flying-fox Record (ALA)
- ▲ Roost (National Flying-fox Monitoring Program)
- ▭ Disturbance Footprint
- ▭ Study Area
- Potential Grey-headed Flying-fox Habitat**
- Foraging and Dispersal



**FIGURE 7.10E**

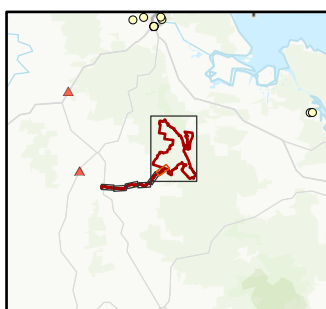
**GREY-HEADED FLYING-FOX  
POTENTIAL HABITAT**





#### Legend

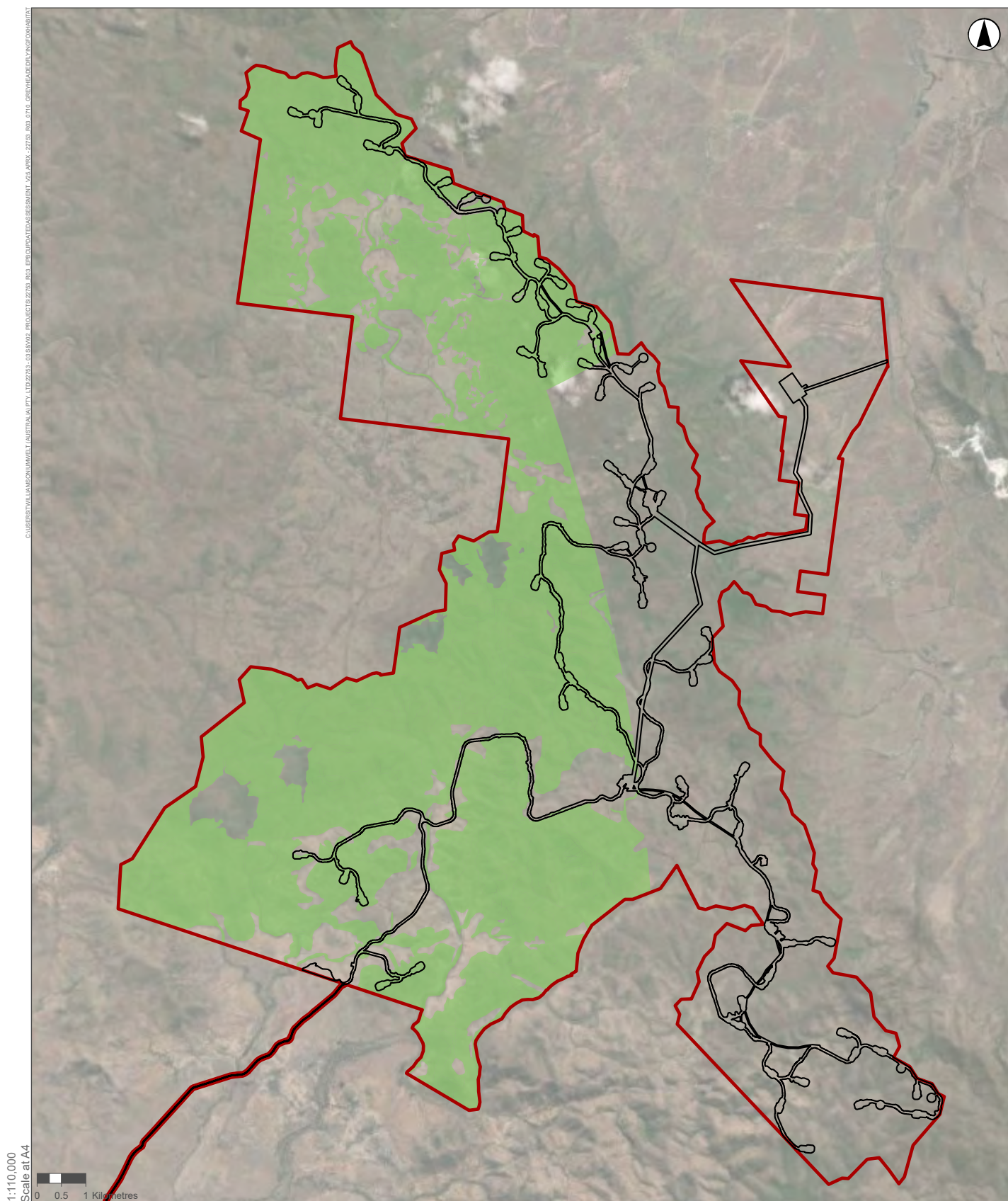
- Grey-headed Flying-fox Record (ALA)
- ▲ Roost (National Flying-fox Monitoring Program)
- ▭ Disturbance Footprint
- ▭ Study Area
- Potential Grey-headed Flying-fox Habitat**
- Foraging and Dispersal



**FIGURE 7.10F**

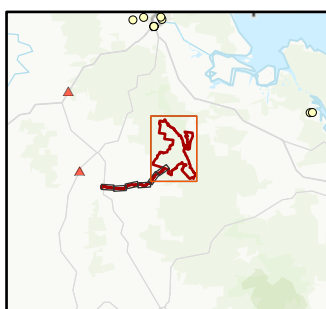
**GREY-HEADED FLYING-FOX  
POTENTIAL HABITAT**





#### Legend

- Grey-headed Flying-fox Record (ALA)
- ▲ Roost (National Flying-fox Monitoring Program)
- ▬ Disturbance Footprint
- ▭ Study Area
- Potential Grey-headed Flying-fox Habitat**
- Foraging and Dispersal



**FIGURE 7.10G**

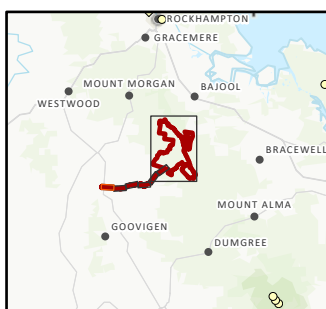
**GREY-HEADED FLYING-FOX  
POTENTIAL HABITAT**





### Legend

- Red Goshawk Record (ALA)
- Disturbance Footprint
- Study Area
- Potential Red Goshawk Habitat
- Marginal Foraging and Dispersal



**FIGURE 7.11**

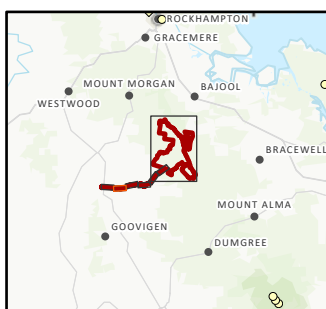
**RED GOSHAWK POTENTIAL HABITAT**





### Legend

- Red Goshawk Record (ALA)
- ▭ Disturbance Footprint
- ▭ Study Area
- Potential Red Goshawk Habitat**
- Marginal Foraging and Dispersal



**FIGURE 7.11**

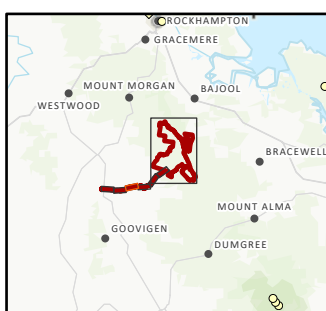
**RED GOSHAWK POTENTIAL HABITAT**





# Legend

- Red Goshawk Record (ALA)
- ▭ Disturbance Footprint
- ▭ Study Area
- ▭ Potential Red Goshawk Habitat
- ▭ Marginal Foraging and Dispersal



GDA 1994 MGA Zone 56

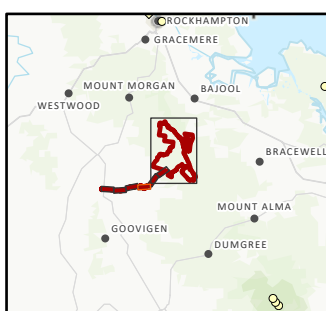
**FIGURE 7.11**  
**RED GOSHAWK POTENTIAL HABITAT**





# Legend

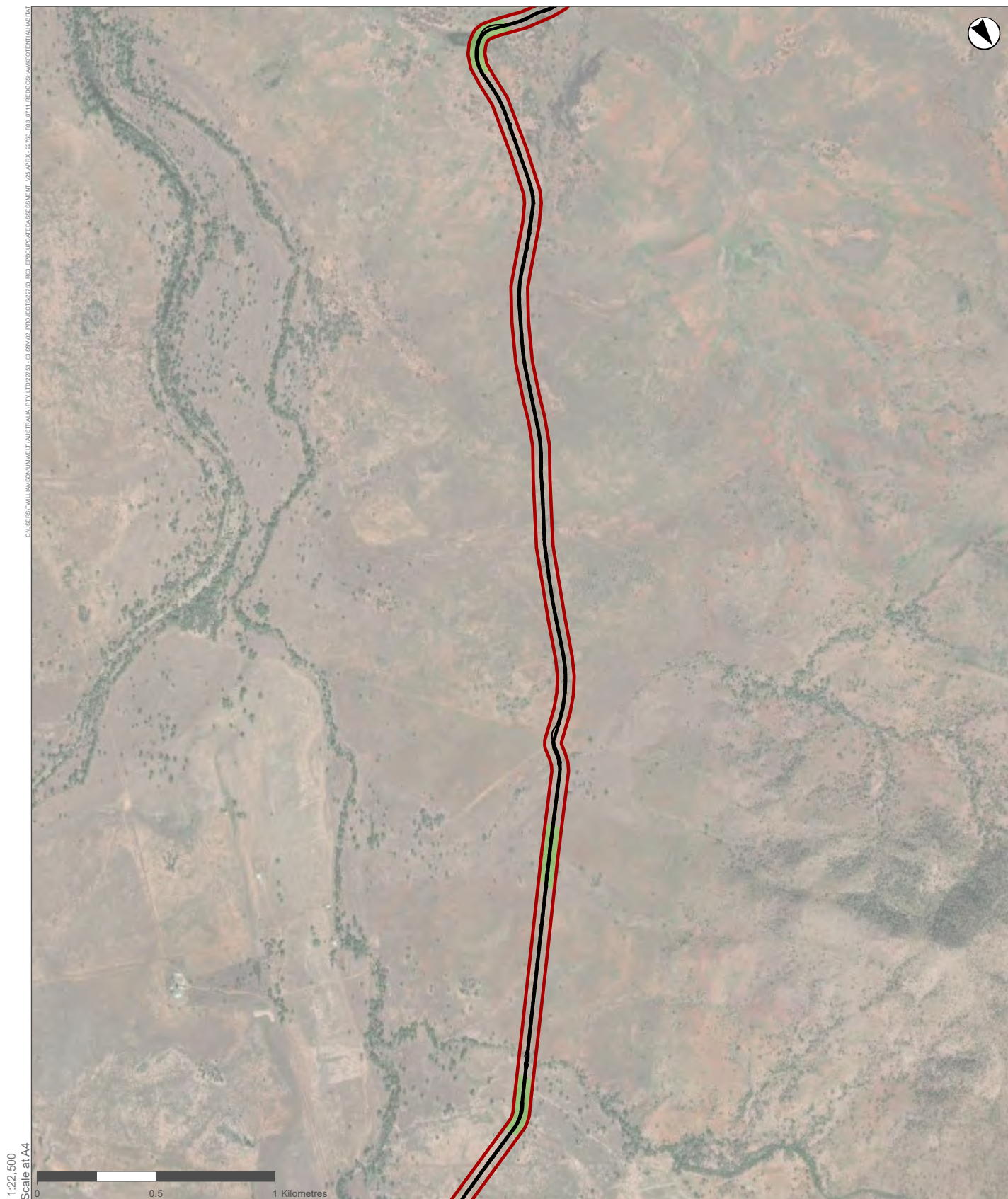
- Red Goshawk Record (ALA)
- Disturbance Footprint
- Study Area
- Potential Red Goshawk Habitat**
- Marginal Foraging and Dispersal



GDA 1994 MGA Zone 56

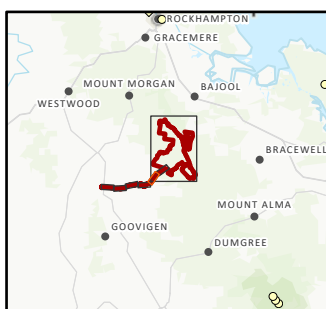
**FIGURE 7.11**  
**RED GOSHAWK POTENTIAL HABITAT**





### Legend

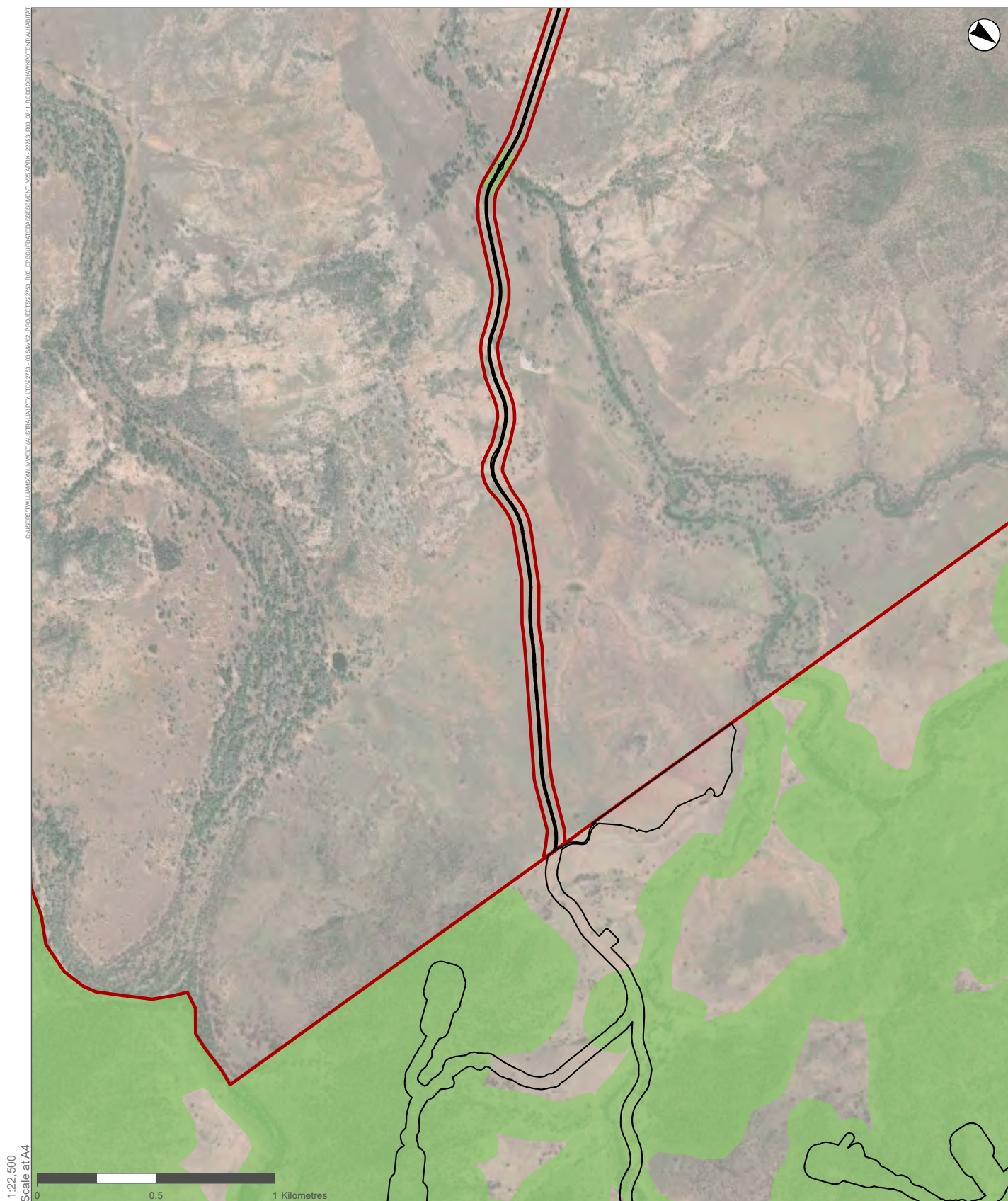
- Red Goshawk Record (ALA)
- Disturbance Footprint
- Study Area
- Potential Red Goshawk Habitat**
- Marginal Foraging and Dispersal



GDA 1994 MGA Zone 56

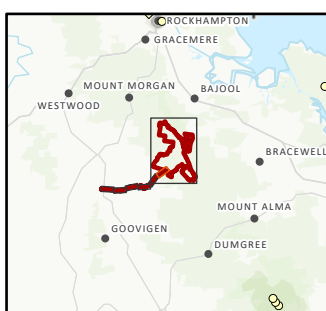
**FIGURE 7.11**  
**RED GOSHAWK POTENTIAL HABITAT**





### Legend

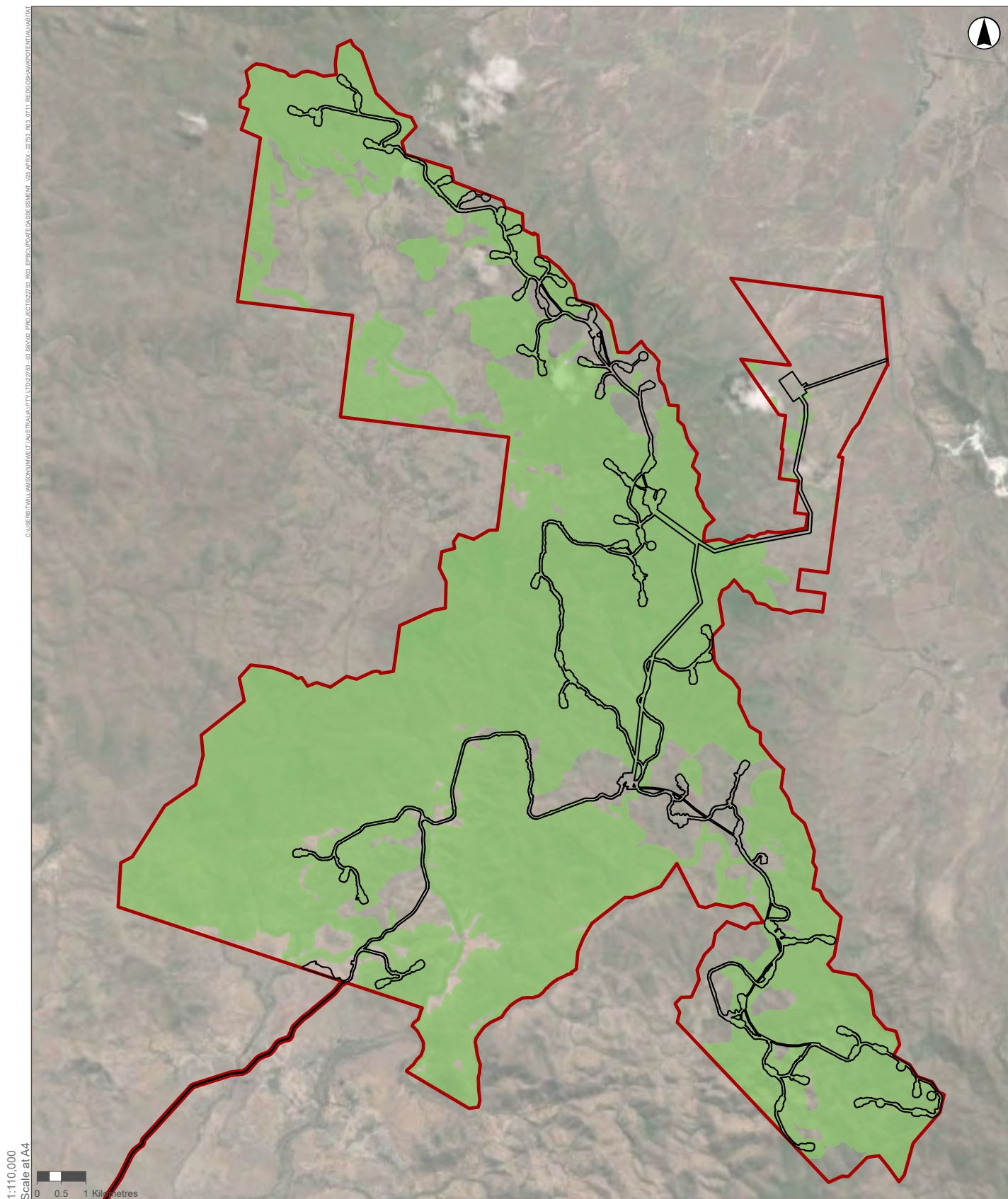
- Red Goshawk Record (ALA)
- Disturbance Footprint
- Study Area
- Potential Red Goshawk Habitat**
- Marginal Foraging and Dispersal



GDA 1994 MGA Zone 56

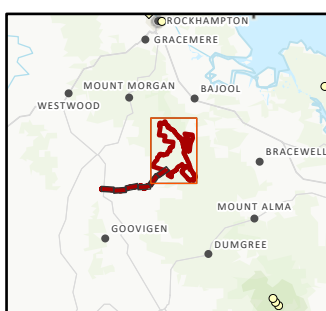
**FIGURE 7.11**  
**RED GOSHAWK POTENTIAL HABITAT**





#### Legend

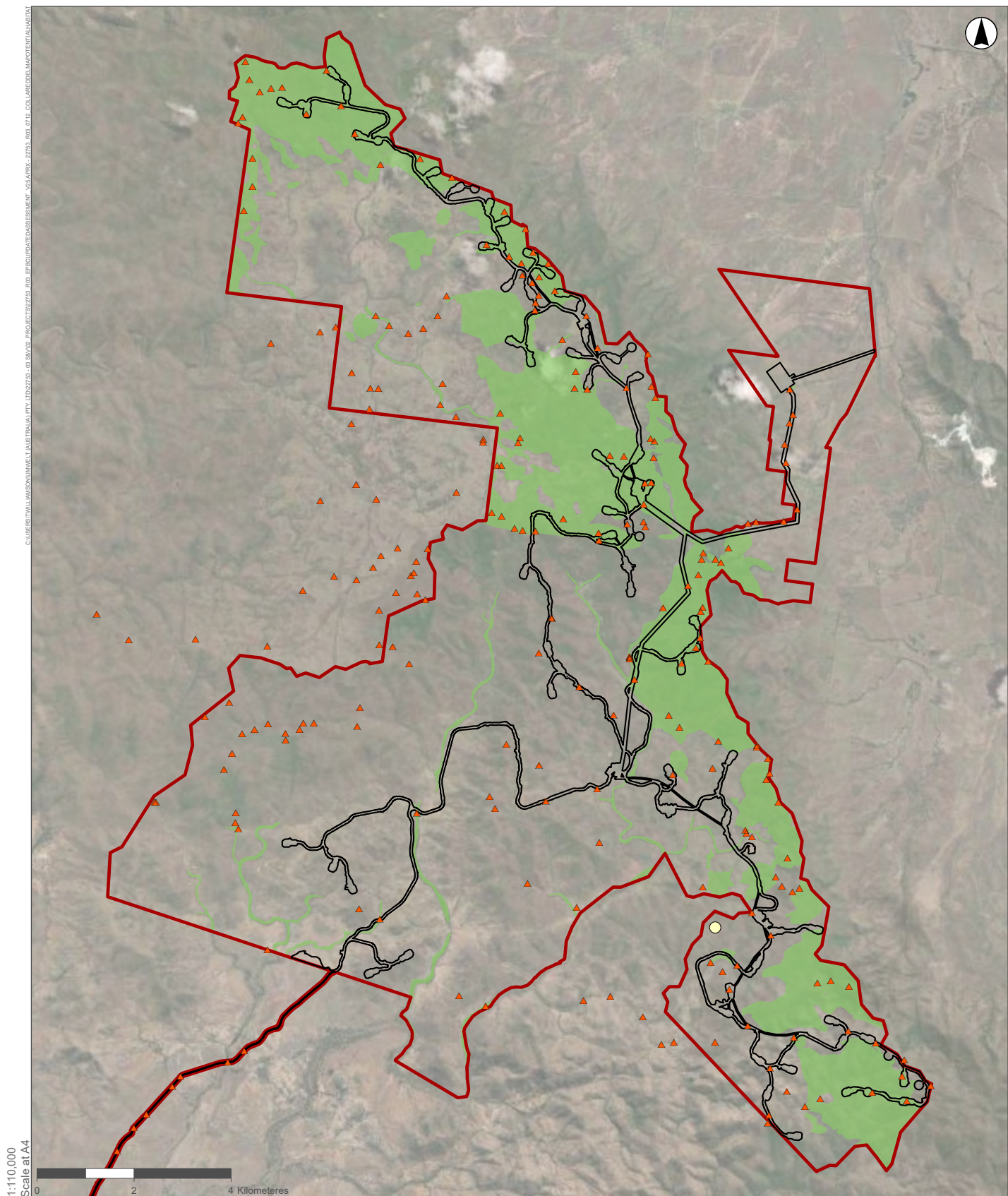
- Red Goshawk Record (ALA)
- Disturbance Footprint
- Study Area
- Potential Red Goshawk Habitat
- Marginal Foraging and Dispersal



**FIGURE 7.11**

**RED GOSHAWK POTENTIAL HABITAT**





#### Legend

- Collared Delma Record (ALA)
- ▲ Active Diurnal Search Sites
- Disturbance Footprint
- Study Area
- Potential Collared Delma Habitat**
- Breeding and foraging

GDA 1994 MGA Zone 56

**FIGURE 7.12**

**COLLARED DELMA POTENTIAL HABITAT**



